

Making Our Communities'

DREAMS

Come True



COMMUNITY IMPACT REPORT

2023

“

*A dream doesn't become reality through magic;
it take sweat, determination and hard work.*

- Colin Powell



DREAMS

Although 'Dreams' is our theme this year, it is more than just a theme; it encapsulates the aspirations of people. Dreams have the ability to inspire us, to push us to be our best selves and to help us achieve the impossible. Your belief in our community and your willingness to invest in dreams for the community's future is truly inspiring.

Thank you for entrusting us as your community partner. CKCF helps fulfill dreams through community collaboration. It is through bringing together people and organizations that we multiply our impact. Throughout these pages you will see examples both of dreams unfulfilled and dreams realized. The most beautiful stories sometimes come through what people create for others out of their unfulfilled dreams.

It is often as we reflect over our lifetime that we see the various ways people and a community invest in us as individuals, families and micro-communities that matter to us. We can continue this important work and ensure that our community thrives for the generations who follow us.

Work to enhance our community often starts as someone's dream. If you could wave a magic wand, what would you do for our community? Let's have a conversation and explore how to make your dream a reality.

That stepping stone can put a dream into action and make it tangible and achievable.



Matt Hess
Board Chair



Davette B. Swiney
President and CEO

A Family Legacy

How do a family's values transcend from one generation to the next? Look no further than the Keith Family.



Sports were important to Brian and Lindsey Alica growing up and it continues with their three sons, Barrett, Palmer and Chapman. As a result, the Youth Sports Fund of Hardin County is meaningful to their family.

From conversations around the dinner table to active work in the community, Roy and Susan Keith established a giving culture in their family that has continued through their children, grandchildren and now great-grandchildren.

Mary Keith Bell, the couple's daughter, remembers being a child and sitting around the kitchen table, listening to her parents impart words of wisdom to her and her siblings.

"It is probably selfish, you get so much more of a blessing from helping others," said Susan Keith. "Every time you go to volunteer you concentrate on what you are going to do, but they always end up giving us so much more."

Although their community involvement is too lengthy to list, it is filled with their commitment to education, church and people.

"I saw them giving their time to their church, to their community and in the schools," Mary said. "They both taught Sunday school classes and did all kinds of work at the church. Both served on several boards, including Helping Hand of Hope."

For many years, Mary has continued the family legacy of community service in several ways,

including serving as a scholarship reviewer for Central Kentucky Community Foundation.

"We need many scholarship reviewers each year," said Davette B. Swiney, President/CEO of CKCF. "Not everyone can give the time required to evaluate applications for some of our larger, more competitive scholarships. Mary is always quick to take the tough panels. When she finishes her reviews, she volunteers to do more, when we need extra help."

Roy and Susan have a long history with Helping Hand of Hope. Their son, Roy Keith, Jr. has continued the family's support by serving on the board and being instrumental in the merger and growth leading to the new building in 2022.

Lindsey Keith Alica, daughter of Roy and Linda Keith, Jr., has continued in the path established by the family generations before her. And like them, her community involvement and generosity are wide-spread. Now, Lindsey and her husband Brian, are continuing to set an example of these same values with their children.

Lindsey is a past chair of the CKCF Board, was a founding member of Heels Together, a women-led initiative to support women and girls in Hardin

County, led the Home of Philanthropy campaign and has been instrumental in starting several community funds at CKCF.

One fund, the Youth Sports Fund of Hardin County, is special to her family. The fund encourages and supports youth participation in recreational sports, making opportunities available to any player, regardless of their financial situation. The fund provides scholarships for registration fees and equipment.

"Conversations around our dinner table are always about sports," said Lindsey. "Sports created some of my fondest memories as a child growing up. Some of my best relationships were built on the sports field. Sports are integral to my family, and this is something we wanted to create a way for the community to support."

And now her boys are passionate about the fund, with her son Palmer coining the tagline "It starts with cleats."

"As we talked as a family about why this fund is important, on the way home from football practice, Palmer simply said, 'It just starts with cleats' and that sums it up," she said. "We want the experience of being on a team, being coached, and playing sports to be offered to every kid who needs it and wants to play."

The Youth Sports Fund of Hardin County has been an inspiration to Grayson County, where a similar fund will launch in 2024.

"Lindsey's leadership and ideas make everything she's involved with better," said Swiney. "She is always thinking about how we can involve more people, create things that will grow in the future, not just get something done today."

The Youth Sports Fund of Hardin County is creating a legacy in the lives of youth. The Keith family continues to create a legacy in our community with each generation.



Roy and Susan Keith set the example of community involvement and giving in their early days as a couple, and it has influenced the generations that follow them.

“
*If you are part of a
community, you can
always take, but you
have to give some, too.*

- Roy Keith, Sr.



Contact CKCF at 270-737-8393 or info@ckcf4people.org to learn more.

Partners in Philanthropy

Philanthropic Matchmaker

Do you ever wonder what the needs are in our community?
What organizations are working on causes you care about?
That's where CKCF's Partners in Philanthropy program shines.

"The Granted program allows us to help support our community in ways that we didn't know were possible," said Nancy McCoy, Quality Manager at Dow. "Through the program we have made connections with agencies in the community that support our mission and share our values," she added.

Donors often choose grant projects they want to see come to fruition. Hardin County Schools sought support to launch the Hardin County Schools Youth Orchestra, which resonated with David and Sherlyn Goodman.

"David and I have been involved in music all our lives. I am a retired elementary music teacher and David sang in a gospel quartet for many years," said Sherlyn Goodman. "We want others to be able to participate in an orchestra and for the community to be able to enjoy it!"

CKCF works with nonprofit organizations to submit grant proposals that demonstrate how they propose to address areas of need and opportunities in the community. A volunteer committee evaluates grant applications and performs due diligence on applicants before they are made available for funding.

"It feels a bit like playing matchmaker – philanthropic matchmaker," said Davette B. Swiney, President and CEO. "As we work with donors, we learn their interests and passions. We are able to share grant applications that align with their giving priorities, helping connect projects and donors."

In 2023, the third year of Granted, CKCF made 19 grant awards totaling \$125,328!

"Through our literacy program, Hope Academy for Kids (formerly Mission Hope for Kids), focuses on fostering a love for reading," said Nelle Thomas, Executive Director of Hope Academy for Kids. "The grant from CKCF means so much to us because it helps us create a modern learning space with updated furniture that is safe, practical, adjustable, and sturdy."

Sometimes needs or ideas are bigger than one person. When several people come together through Partners in Philanthropy our community can make even bigger things come to life.

Eleven grants in 2023 had support from multiple donors.

"We also know some great grant proposals may not attract the attention of a specific donor," said Swiney. "That is where CKCF's MADE Fund steps in."

CKCF's MADE Fund, an unrestricted fund for flexible use in the community, provides a base of support annually for Granted. Donor Advised Fund holders and other community donors unite to support grants.

Granted awards more than doubled in 2023 impacting even more lives, thanks to strong grant requests and the great generosity of donors.



Learn more about becoming a Partner in Philanthropy
by calling 270-737-8393 or visit info@ckcf4people.org

Pictured from left to right, Davette B. Swiney, Tonya Vowels from Hardin County Schools and Partners in Philanthropy donor, Sherlyn Goodman.



“

The grant will allow us to improve our technology capabilities tremendously...we will be able to better serve our visitors and improve their overall experience making it more meaningful for them. We truly appreciate the vote of confidence and support CKCF gives us.

- Iris LaRue, Executive Director of The Lincoln Museum



Hope Academy for Kids was able to purchase a new library nook for their children through Granted funding provided by Partners in Philanthropy donors.



Pictured from left to right, Rob Thurman from The Lincoln Museum, Partners in Philanthropy donor, Nancy McCoy from Dow, and Iris LaRue from The Lincoln Museum.

Dreams Dashed, Legacies Honored:

Kennard Peden's Journey from Disappointment to Educational Empowerment

Kennard Peden had a huge dream, especially for a young person growing up in the 1930's. His dream was to go to college, and he worked hard toward that dream. He applied and was accepted to Purdue University. He also received a scholarship based on his academic achievements in high school.

But he faced another challenge. The United States of America was in the depths of the Great Depression, and Kennard felt strongly about his responsibilities to care for his family.

Ultimately, Kennard didn't realize his dream of going to college, particularly Purdue University, which was a great disappointment. Later in life, he had another dream about education; one that created an opportunity for other people to attend college and to fulfill their own dreams.

The key step in that dream was serving as a founding member of North Central Education Foundation, now Central Kentucky Community Foundation. Kennard was very active in the multi-year endeavor to open a college in Elizabethtown. He never lost his appetite for helping other people realize their education promise. He made it his and his wife Melva's life journey to make sure everyone who wanted an education had an opportunity.

Kennard's belief that when one door closes, there's an even better door that can open for you, truly played out in his life. He realized that second dream when what is now Elizabethtown Community and Technical College opened in 1964.



Kennard and Melva Peden

As his involvement with the community and education continued, he looked for ways to ensure local students could have the high-caliber experiences he aspired to at Purdue.

Recognizing two key challenges existed to deliver the highest quality of college experiences: removing obstacles for students to enter college, and equipping faculty to be relevant in the marketplace, Kennard addressed both. He understood you can't improve just one side of the educational equation. Students and faculty partner together to create the best environment to make dreams come true. After working during his lifetime to reduce student obstacles, he focused the next phase of his legacy on faculty.

The Pedens created the answer to these challenges through a bequest established in their will. The Kennard and Melva Peden Fund was established as an \$800,000 endowment with Central Kentucky Community Foundation. The Fund provides support annually for the ECTC faculty to make sure they have the latest resources and the latest knowledge so they are relevant in the classroom for students.

Pictured: (left) Marty Southerland, faculty sponsor and (right) Tanner Blake, ECTC student and member of the Vex Robotics Team demonstrates how they use robots to learn and compete.

GRANT PROFILE

Beginning in the fall of 2008, grant awards were made from the Peden Fund and have continued every semester, now exceeding \$225,000 to faculty and for student success. A recent grant recipient was the ECTC Vex Robotics Club funded to attend VexU World Competition, where students competed against and learned from other schools.

In Vex Robotics, students learn how to build, operate and maintain robots.



ESTATE PLANNING

Kennard and Melva Peden considered the community a beneficiary when they made their final plans. An estate gift is a great way to support what has mattered to you during your lifetime. Including Central Kentucky Community Foundation in your estate plan is an easy way for you to make an impact on the community and interests you care about and leave a legacy that lasts forever.

After ensuring your loved ones are cared for, we offer a variety of ways you can use your assets to make a planned gift and accomplish your charitable goals.

For many Americans, their charitable dollars are invested close to home. Whether it's an organization that has touched their life in a meaningful way or a cause they are passionate about, when it comes time to donate, they want to see their dollars make a difference in their community.

It's no different when it comes to their estate planning. People want to make a lasting impact on what matters most to them. We can help!

Contact CKCF at 270-737-8393 or info@ckcf4people.org to learn more.

Crowd-source funding supports new learning experiences

What IF learning could be hands-on, engaging and fun? It can be! That's where CKCF and the community stepped up to collaborate and help some classrooms thrive.

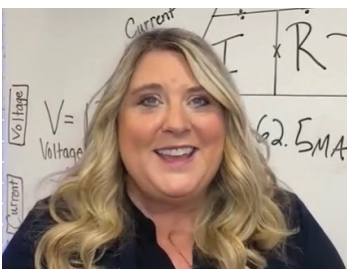
As education evolves to engage students differently in the learning process, the "tools" to teach also evolve. For some lessons, materials like toothpicks or pool noodles are more valuable to demonstrate concepts than a book or worksheet. This project-based learning approach has students building, creating, and learning through classroom projects. It is an effective approach for students to engage in hands-on, collaborative projects that deepen their understanding and foster critical thinking skills.

Susan Hatfield's science and engineering students at East Hardin Middle School are conducting a field study at the Nolin River. The students will enter the data they collect into the National GIS Map which is publicly accessible through ArcGIS mapping software. The data will be collected bi-annually and the health assessments will allow them to monitor how local commercial development could impact that ecosystem over time.

To help fund the materials required for these projects, Hardin County Schools partnered with CKCF to launch, **Let's Fund HCS**, a crowd-source funding effort. Let's Fund HCS simplifies the process for teachers to seek support and for the community to give to verified and worthy educational projects.

Hardin County Schools teachers submitted twelve applications to Let's Fund HCS. The first Let's Fund HCS campaign raised \$2,035 and fully or partially funded ten of the twelve projects.

"We are truly grateful to our friends at CKCF for hosting Let's Fund HCS," said Teresa Morgan, Superintendent of Hardin County Schools. "Support from donors and various community members will give our students opportunities they would have never had access to if it weren't for Let's Fund HCS! CKCF staff and donors are there to support our students and staff at every turn and we simply can't properly express our gratitude!"



I'm excited to bring real-world skills to my students and the money will be used to purchase field study equipment such as soil thermometers, oxygen meters and test kits.

- Susan Hatfield

Want to learn more?

If you are interested in learning more about Let's Fund HCS or other ways CKCF's crowd-source funding platform can work for your organization **please contact us at 270-737-8393.**

Hart County Scholarship Alliance

How do you help people dream bigger?

Rachel Horton excelled academically at Hart County High School when she was offered the opportunity to take dual-credit courses her junior year. She wanted to continue her academic career, but she knew it was a big financial hurdle for her family. The Hart County Scholarship Alliance helped her get over that hurdle.

The Hart County Scholarship Alliance (HCSA) started with a vision to increase the number of students pursuing post-secondary education - college, trade school, certificates - any way to better themselves. They found a successful niche with dual-credit courses. High school students can take college classes that also fulfill their high school requirements, earning credit for both high school and college.

"We give students (and their families) a way to explore college, realize they can be successful and have the confidence to pursue higher-education," said Steve Kistler, Director of the volunteer effort. "The cost savings for Hart County families is enormous compared to the cost of college tuition."

Since HCSA started assisting students in 2015, 267 students have taken 914 dual-credit classes through the support of HCSA.

"The Hart County Scholarship Alliance helped me with the cost to begin my college career. My mother is a single mom who couldn't afford to send me to college," said Horton. "This opportunity gave me the experience of college while still at home and with extra support from my high school teachers."

With the emotional support from her family encouraging her to try the dual-credit program and financial support from HCSA, Rachel worked hard obtaining her associate degree at the same time she graduated from high school. She went on to graduate with a bachelor's degree from Western

Kentucky University (Glasgow campus) and is now a 5th grade teacher at LeGrande Elementary School in Hardyville.



Rachel Horton's dream of becoming a teacher became a reality through hard-work and support from her family and community. Now she tries to instill that dedication in her students.

"This was such a great opportunity for me and others. I am very thankful to have this support during my high school and beginning college career," said Horton. "Without this support I don't know if I would have gone to college at all."

Rachel learned about fulfilling dreams with hard work from her college experience, and it is a virtue she tries to instill in her students today.

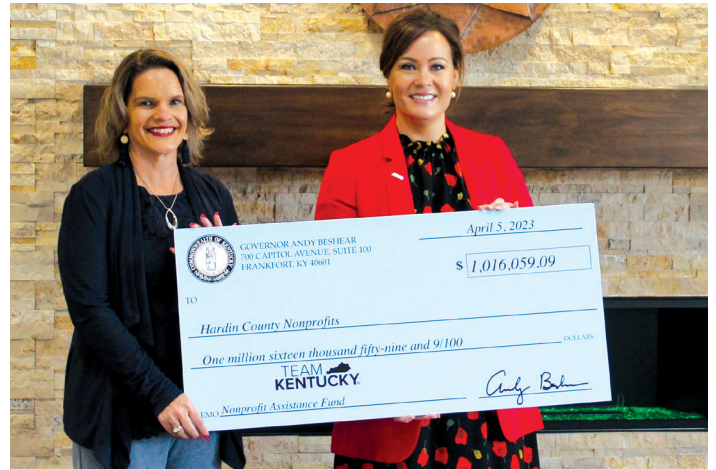
"I tell my kids if you want something, you need to put forth effort to make it happen," she said. "If you put forth effort there will be plenty of people to help walk that path with you toward your goal."

The Hart County Scholarship Alliance, in partnership with Central Kentucky Community Foundation, makes need-based scholarship awards to students in Hart County through the support of local donors. This is just one example of how a community can come together with dreams to help shape the future for individuals and the whole community.

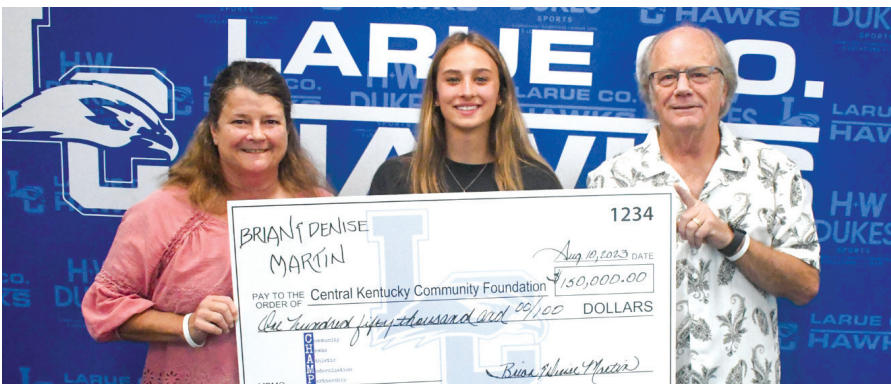
FACES IN PH



Alice Driefuss Goldstein, right, shared her story as a Holocaust survivor at Never Again: One Holocaust Survivor's Story on October 18. Following the program presented by the Marvin and Joyce Benjamin Fund, some area high school students got a photo with Mrs. Goldstein.



We love BIG checks! Lt. Governor Jacqueline Coleman stopped by the Home of Philanthropy to present a check representing state grants to nonprofits in our region through the Nonprofit Assistance Fund.



Brian and Denise Martin presented the first gift to LaRue County High School student Mollie Jo Wooldridge to the Community Hawks Athletic Modernization Partnership (C.H.A.M.P.) program. The C.H.A.M.P. Fund is a local initiative to upgrade LaRue County Schools' athletic facilities.



All Smiling Faces! Nonprofit friends gathered to celebrate \$125,328 in awards through CKCF's Granted Program. Support for Granted comes from CKCF's unrestricted giving fund, Make a Difference Everyday (MADE) as well as CKCF donors and fundholders through Partners in Philanthropy.

ILANTHROPY



Everyone was all smiles during the Bardstown Celebrating Achievement program this spring. Scholarship recipients Emi Mizutani and Luke Phelps and Misty Roller, scholarship recipient parent. Celebrating Achievement awarded 182 scholarships to 142 student totaling \$352,000.



Marilyn Ford, Ann Gordon, and Lynette Kennedy learned about past grants and how prospective investors can get involved with Heels Together at the Fun with Fillies event. Heels Together is a women-led initiative that unites money, ideas and actions to create lasting change for women and girls in Hardin County.



Hard work never looked so fun! Elizabethtown City Councilman Tony Bishop planted apple and pear trees in the new Central Kentucky Community Orchard. The Central Kentucky Community Orchard is part of a sustainability initiative grant from Dow in partnership with the City of Elizabethtown at the Elizabethtown Nature Park.



Jesse Fulkerson, Kylie Marcum, Hannah Martin, and Kayleigh Thomas enjoyed a group photo to celebrate their scholarship awards at Celebrating Achievement, CKCF's annual celebration of Scholarship Central scholarship recipients.

Gathering for Good: Community Hall Welcomes Groups To Dream and Do

CKCF's Home of Philanthropy Community Hall serves as a meeting space for community-based organizations, local corporations, and businesses. From youth leadership programs to grant workshops to nonprofit meetings, our Community Hall welcomes groups most days. What began as a dream—a simple vision for a space where local organizations could convene—has become something far greater than anyone could have imagined. The Community Hall is a vibrant hub where the community converges to collaborate and advance our community.



Kim Howell from Women's Christian Group:

"Elizabethtown Area Christian Women's Connection group uses the Community Hall as a great place to invite our ladies to lunch. We are blessed to use the Hall as a means to reach our mission! Thanks for allowing our group to use your great facility."



Linda Luckett from Elizabethtown Women's Club:

"Being a non-profit organization, we operate on a very tight budget so we can give back to our amazing community every dollar possible. We rent the Community Hall to hold our annual Christmas Tea and it has been sold out for the last two years! What a wonderful gem we have right here in the heart of Elizabethtown!"



Kendra Stewart from Hardin County Chamber of Commerce:

"The CKCF Community Hall is the perfect location for various Chamber programs. It is spacious, accessible and modern. Our Community enjoys the space and we are thankful and blessed to have it."

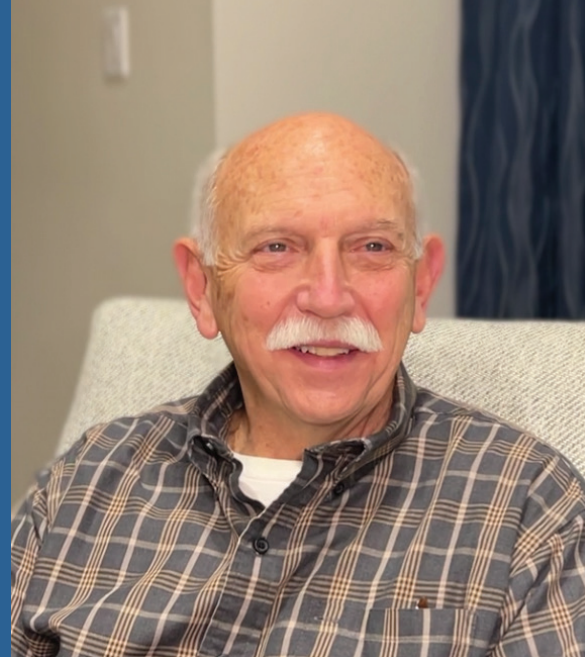


John Wright from Hardin County Schools:

"The Community Hall at the Home of Philanthropy is a wonderful venue because of its central location and accessibility. The room's technology helps presentations become more engaging. The student groups we've brought to the Community Hall enjoy it because there is plenty of room to participate in cooperative learning activities."

Tracy Schiller - more than a "friend" of CKCF

Tracy Schiller spent his career often seeing people on their worst days. Now, as the retired Police Chief for the Elizabethtown Police Department, he has found fulfillment in seeing the good in our community and the many people who are part of making our community a great place.



Tracy demonstrates his dedication to community service in many ways including the Hardin County Chamber of Commerce, CASA of the Heartland, and United Way of Central Kentucky. At CKCF, we are honored that he shares himself with us as a volunteer, donor, scholarship evaluator, and champion of the Foundation. His journey with us began over a decade ago while still in his role as Elizabethtown's Chief of Police and has flourished in many facets since his retirement.

As a volunteer, Tracy has dedicated many hours to various initiatives and CKCF projects. Whether it's being a scholarship evaluator or an event volunteer, Tracy's presence plays a pivotal role in advancing CKCF's mission to enhance the quality of life in our community.

"I've been blessed to be part of some of the programs you help develop and provide for people in our community," he said. "That's where I see great examples of philanthropy and CKCF being so successful."

Tracy's philanthropic spirit extends to his role in helping to establish the Elizabethtown Police Foundation Endowment Fund to support our law enforcement officers. He recognized the importance of financial support for the people who keep our community safe.

"We needed to find a way to ensure the longevity of the fund and that was a struggle especially since

the police foundation was new," said Tracy. "If we didn't connect with CKCF, I don't know that we'd be around today to provide great services for our law enforcement family."

As a friend of CKCF, Tracy inspires others to understand community is more than just a place where you live, but a mosaic of shared experiences, dreams, and aspirations through his willingness to serve others. He connects CKCF with community members, sharing our story, and understanding the value of CKCF in community development.

"CKCF offers a great opportunity to connect people with what they would like to contribute to the community, in whatever way they want to make a difference," said Tracy. "I will tell you, this organization does wonderful things for the community."

A relationship with CKCF can foster meaningful connections through impactful community initiatives and projects. We would love to hear from you.

Please email us at info@ckcf4people.org.



Endowment Gift helps to secure Marion County Public Library services forever

When Amy Morgeson, Director of the Marion County Public Library, received an exciting, yet unexpected phone call about an estate gift for the library, she wasn't sure where to turn.

A quick conversation with colleague Rene Hutcheson at the Hardin County Public Library had her on the right path to Central Kentucky Community Foundation.

One of 14 beneficiaries of Emily Hundley's generosity through her estate, the Marion County Public Library now has an endowment fund to help supplement its work forever.

An endowment fund is a common way for people to make estate gifts since it preserves the initial gift and uses the earnings to support the charitable purpose. The fund never goes away. This is an attractive way for a gift to last forever and is a meaningful demonstration of the donor's life, interests, and generosity.

"When we think about a gift that represents a person's lifetime, that is significant and more than a one-time gift to be quickly spent," said Davette B. Swiney, President/CEO of CKCF. "An endowment will continue to support the purpose or organization, the Marion County Public Library, forever."

"We are in the community education, resource and book business," said Morgeson. "Although our library board is tasked with financial oversight of tax dollars, we weren't sure how to best handle this unexpected gift. After talking with Central Kentucky Community Foundation, we knew they were a partner who could help us navigate our first endowment."

By the time the estate was settled and distribution made to the library, Jamie Collins had taken over at the helm of the library.

"Professional fund management and service from Central Kentucky Community Foundation takes that burden off us," Collins said. "I was relieved to have this partnership in place so we can focus on what we know - libraries and depend on CKCF for our endowment fund service."

The Marion County Public Library Endowment Fund gives the library a way to do some "extra" things above the taxpayer support it receives. Although the library is tax-supported, there are always funding limitations and tough decisions to be made on the allocation of resources. This fund is broad in focus, giving the library flexibility in its spending to best meet current needs.

"It's nice to know we have that recurring money available," said Collins. "We expect to replace the bookmobile in the next few years, and this could be a way to do that without cutting into other areas of library service."

"I hope Ms. Hundley's gift will be an example to people who value our library," she said. "Other people can give to this fund or create a specific fund for areas of the library such as new books, children's services or genealogy."



The Marion County Public Library is now able to expand services they only dreamed about due to the endowment fund given to them.



"A Book is a dream that you hold in your hands." - Neil Gairman

Libraries have supported their communities for generations. Endowment funds offer the community a way to support the library long term. In addition to the Marion County Public Library Endowment Fund, CKCF holds three endowment funds for the Hardin County Public Library. Two funds, the Hardin County Library Duff Book Fund and Hardin County Library Mitchell Book Fund provide money annually to purchase new books, adding new titles to the collection for residents to enjoy. The Hardin County Public Library Fund has a broad focus like the Marion County Library Fund, giving the library the most flexibility to supplement programming where needed.

Would you like to create a fund for your community library? We would love to talk with you further about it. Call us today 270-737-8393.

Elevate Your Company's Mission and Impact

Business owners and corporate leaders are great philanthropists. And they understand the value of giving their employees the opportunity to give back to their communities. Businesses of any size can stand taller in their community with corporate charitable giving programs from Central Kentucky Community Foundation. We offer an array of services, and expertise on how to multiply your local impact.

Corporate Giving Funds

Organize all your company's philanthropy under one structure, without the tax paperwork and legal fees of a private foundation. Focus on one area of interest, designate proceeds to a community grant fund, create an employee assistance fund, or leave your options open as a Donor Advised Fund. The possibilities are endless.



Becca's Place Gymnastics Supporting Youth Sports aligns with Becca's Place business and giving is a core corporate value. Their continued support of the Youth Sports Fund through their summer camp fundraising program helps more young people in our community get to play sports.

Community Initiative Sponsorship

Underwrite efforts to empower nonprofits effectiveness, convene stakeholders to solve community challenges, or inspire generosity through supporting a giving circle.



Signarama Elizabethtown Sponsoring the new Nonprofit Roundtable was a perfect fit for Signarama. With a passion for nonprofit work, this sponsorship was a great way to support many nonprofit organizations as they came together to learn and connect.

Partners in Philanthropy: Fulfilling Local Nonprofit Needs

Learn about specific needs in the community and provide grants that align with your giving priorities through our Granted program.



Dow Corporate giving made easy. Dow uses CKCF's Granted program to identify grants that align with their giving priorities. In 2023, they funded grant requests for the Lincoln Museum, Imagination Library, Project Learn and the American Cave Conservation Association.

Matching Gift Programs

Leverage matching gift programs from a parent company or franchise brand. Or build a matching funds program for employee time and monetary contributions.



Swope Toyota utilized the Toyota Dealer Matching program to support grants through CKCF's Granted program. The generosity of Swope Toyota was doubled with Toyota's match to help fund grants throughout our region.

Additional Services

- Scholarship Funds
- Competitive Grantmaking
- Volunteer Programs
- Customized Philanthropic Services

BECOME A PARTNER TODAY

Learn more at ckcf4people.org

2023 CKCF Funds



Charitable Remainder Trust

- Llewellyn Charitable Remainder Trust Funds (2)

Community Enhancement

- **Community Hawks Athletic Modernization Partnership**
- Florence Y. Mason Fund
- Home of Philanthropy Fund
- Joe and Lenelle Hays Community Spirit Fund
- **LaRue County High School Athletic Facilities Endowment Fund**
- Marvin and Joyce Benjamin Fund
- Ruby N. Deitchman Fund
- * Tony/Becky Bishop Community Fund

Donor Advised Funds

- Anne and Carl Swope Fund for Endow KY
- Anonymous Funds (3)
- Bob and Ella Mae Wade Fund
- Bowers Family Endowment Fund for Endow KY
- Byler Family Fund
- Carter Family Fund
- Carter Family Fund for Endow Ky
- Chad and Amy Brown Donor Advised Fund for Endow Ky
- **Charles and Kathy Cravens Donor Advised Fund**
- Conrad Hotopp Family Fund
- **Denise and Brian Martin Fund**
- Dennis and Lisa Parrett Family Donor Advised Fund
- Dr. Chris and DaneNell Knight Fund
- **E Renee Young Family Fund**
- Ed and Georgia Gordon Donor Advised Fund
- Ed and Georgia Gordon Endowed Donor Advised Fund
- Fisher Family Fund
- Fowler Family Fund for Endow Ky
- Fripp Family Fund for the Future
- Godfrey Family Foundation Fund
- Gourmand's International Culinary Donor Advised Fund
- James and Patricia Schory Fund
- **JR Stella Fund**
- Nandi's Smile Fund
- * Nelson and Opal Gonterman Charitable Fund
- Prather Family Fund
- R. and N. Corbett Wellness Fund
- Ray Family Fund for Endow Ky
- Ryan-Dudgeon Donor Advised Fund
- Scott and Monica Kisselbaugh Donor Advised Fund
- Scott and Monica Kisselbaugh Donor Advised Fund for Endow Ky
- Swope Family Fund for Endow Ky
- Terry and Bonnie Patterson Donor Advised Fund
- The Wade Fund for Endow KY
- **Waters Family Fund**
- William and Joyce Godfrey Fund for Endow Ky

Education

- Bardstown Independent Schools Endowment Fund
- Capogna Science Fund
- Charles and Diane Logsdon Endowment Fund for ECTC
- Elizabethtown Community and Technical College Funds
- Campus Improvement - ECTC Fund
- Capital Projects - ECTC Fund
- ECTC - Faculty/Staff Development Fund
- Elizabethtown Community College Fund
- Endowment for ECTC Faculty/Staff Excellence
- Elizabethtown Educational Foundation
- Financial Foundations Fund
- Get Ready!
- Hardin County Library Duff Book Fund
- Hardin County Library Mitchell Book Fund
- Hardin County Public Library Fund
- Hardin County Schools Early College and Career Center
- Hardin County Schools Partnerships Grants Fund
- Hardin County Schools Support Fund
- Hardin County Schools Support Fund
- Kennard and Melva Peden Trust
- KySTE Agency Endowment Fund
- **Marion County Public Library Fund**
- Mildred Rowlett Education Fund
- Nannette S. Johnston Impact Fund for Hardin County Schools
- Nelson County Schools Endowment Fund
- Samuel G. Jenkins, Jr. Fund for KET
- Tai Sy Le Memorial Fund

Field of Interest

- Donna Mulligan Fund
- Heels Together Endowment Fund
- Heels Together Grant Fund
- **Julie Sutton's Shoes Fund**
- Dow Foundation Grant Fund

Health and Human Services

- Bishop Charitable Fund
- Central Kentucky Cares Fund
- Hardin County Cares Fund
- **Olive Branch Fund**
- Washington County Association for the Mentally Handicapped Legacy Fund

Historical Preservation

- Brown-Pusey Fund
- Holbert Family Fund for Brown Pusey House
- Sallie W. Pusey Fund
- William A. and Sallie W. Pusey Fund

Nonprofit Organizations

- Baptist Health Foundation Hardin, Inc.
- CASA - Court Appointed Special Advocates Fund
- Central Kentucky Community Foundation Endowment Fund
- Clarity Solutions Fund
- Elizabethtown Police Foundation Endowment Fund
- Feeding America, Kentucky's Heartland
- Friends of the Hardin County Animal Shelter
- Nancy Casey Memorial Endowment Fund for FOHCAS
- Greenspace Endowment Fund
- Hardin County Habitat for Humanity Fund
- Harold and Dolly Jackson Endowment for Magnolia Cemetery Designated Endowment Fund
- Hart County Community Fund
- Helping Hand of Hope Fund
- Hope Academy For Kids Designated Endowment Fund
- Hope Academy For Kids Fund
- Silverleaf Endowment Fund
- SpringHaven Endowment Fund
- United Way of Central Kentucky Endowment Fund
- Warm Blessings Endowment Fund

Religious

- Ann Young and Claude Morgan Roebuck Fund for Glendale United Methodist Church
- Ernest and Wilma Rider Endowment Fund for Lucas Grove Baptist Church
- First Christian Church Endowment Fund
- First Presbyterian Legacy of Faith Fund
- First Presbyterian Legacy of Faith Fund for Endow KY
- First Presbyterian Legacy of Hope Fund
- Grace Heartland Church Endowment Fund
- Joe and Dorothy Brothers Designated Fund
- Macedonia Baptist Church Fund
- St. James Catholic Church Endowment Fund
- St. James Catholic School Tuition Assistance Fund
- Valley Creek Baptist Church Designated Endowment Fund

Scholarships

- Amy Alicna Scholarship Fund
- Andrew Kyle Mykytiuk Memorial Scholarship
- Angela Kirchner Memorial Fund for St. James Catholic School
- Ann Mackin Ewing Memorial Scholarship
- Audrey Shoulders Memorial Scholarship
- BCD and J. Michael Salsman PE Construction Scholarship
- Becca Bohannon Memorial Scholarship Fund
- Bob Brown Family Scholarship
- Brent Wagoner Excellence in Education Scholarship Fund
- Brewer Memorial Scholarship
- Brianna and Brice Taylor Scholarship Fund
- Carol Withrow Nursing Fund
- **Cerity (Legacy ARG1 & SCA) Endowed Scholarship Fund**
- Cindy Ethington Memorial Scholarship
- Col. Larry and Betty Sue French Scholarship Endowment Fund
- Col. Michael Baymor Scholarship Fund
- Dana Marie (Underdonk) Bryant Memorial Scholarship Fund
- Deana's 7th Inning Stretch Scholarship
- Dennis and Lisa Parrett Family Scholarship Endowment Fund
- Doug and Lisa Cantrell ECTC Faculty Scholarship
- Dr. and Mrs. E.H. Durnil Scholarship Fund
- **Dr. Chandler Park and Du Sun Watts Family Healthcare Scholarship Fund**
- Dr. Don Berry Memorial Scholarship
- Dr. Gary King Sharp Memorial Scholarship Fund
- Dr. Jim Owen Scholarship Fund
- Dr. Larry and Mary Lou Hall Scholarship Fund
- Dr. Linda Mayhew STEM Scholarship Fund
- Dustin Matthews Memorial Scholarship Fund
- Earl Day Legacy Scholarship Fund
- **Elizabethtown Hardin LaRue Retired Teachers Association Scholarship Fund**
- Elizabethtown High School Class of 1966 Scholarship Fund
- Feleshia Denham Memorial Scholarship
- General Scholarship Funds (4)
- Glenn D. and Bennie Lou Hammons Family Scholarship Fund
- Gourmands International Culinary Scholarship Fund
- Hardin County Bar Association/Teen Court Scholarships
- Hardin County Cattlemen's Association Scholarship
- Hardin County Lacrosse Scholarship Fund
- Hardin County Principal Organization Scholarship
- Harold and Cynthia Carter Memorial Scholarship Fund
- Hart County Scholarship Alliance Fund
- Heart of Kentucky Realtors Association Scholarship
- Helen P. De Graffenried Fund
- J.R. and Carrie Lee Edwards Scholarship Fund
- Jacob Barber and Katarina Peeters Memorial Scholarship Endowment Fund
- James and Betty Holeman Scholarship Fund
- John Dink Scholarship Fund
- Kacy Lee Johnson Memorial Scholarship Fund
- **Karen Heighway Memorial Nursing Scholarship**
- Kathy Mattingly Kidwell Memorial Scholarship Fund
- Kenny Jones Memorial Scholarship Fund
- Lanny Skees Memorial Scholarship Fund
- Larry and Carol Kimberlain Scholarship Fund
- **Larry and Elanor Brawner Scholarship Fund**
- Lisa Hays Charness Memorial Scholarship Fund
- Llewellyn Scholarship Fund
- Mac Michaelis Scholarship Fund
- Martha Jane Hamilton Nursing Scholarship
- Mike and Sharon Bell Scholarship Fund
- Mike Oveson Memorial Scholarship
- **Morrison Masonic Lodge No. 76 F. & A.M. Scholarship Fund**
- Mr. and Mrs. Lewis H. Hall Scholarship Fund
- Nugent McGrew Scholarship Fund
- Obviously Analiese Scholarship Fund
- Owen J. Estes Memorial Scholarship Fund
- P.L. Mansfield Award for Excellence in Mathematics Scholarship Fund
- Patricia Goodman Memorial Scholarship Fund
- Patrick Eldon Bergman Memorial Scholarship Fund
- Patty Lirot Memorial Scholarship
- PFC Sammie Phillips Memorial Scholarship Fund
- Phillip "Duke" and Florence Deeb Owen Scholarship
- Rae of Sunshine Kentucky Scholarship
- Randall Clauson Scholarship Endowment Fund
- Randy Pinkston Memorial Scholarship Fund
- Ray Harm Art Scholarship Fund
- **Rita Highbaugh Memorial Volleyball Scholarship Fund**
- Robin Bohannon Scholarship Fund
- Rylee Marie Razon Memorial Equine Scholarship Fund
- Schmidt Family Scholarship Fund
- Taylor and June Spaulding Memorial Scholarship Fund
- Taylor Martin Scholarship Fund
- **The Carol Johnson Literacy Memorial Foundation**
- Trooper Ponder Memorial Scholarship Fund
- Tyler Foster Memorial Scholarship Fund
- Van Earl and Ruddell Allen Scholarship Endowment Fund
- **Woodrow Miller Memorial Scholarship Fund**

Unrestricted

- M.A.D.E. (Making a Difference Everyday) to fund projects through Granted

Youth Development

- Aaron Reding Memorial Fund
- **Brad Mink Legacy Fund**
- Lahoma Routt Fund
- Youth Sports Fund of Hardin County

Funds opened in 2023 are in bold.

CKCF's Give 5 initiative encourages donors to consider the community in their estate plans. Give 5 Funds are mark with *.



If you are interested in learning more about these CKCF Funds or starting your own fund, please contact us at **270-737-8393** or **info@ckcf4people.org**.

2023 FINANCIAL POSITION

ASSETS

Current Assets

Investment Funds	\$33,382,639
Cash Accounts	\$245,961
Real Estate Gift Holdings	\$129,845
Total Current Assets	\$33,758,445
Total Fixed Assets	\$2,296,489

TOTAL ASSETS

\$36,054,934

LIABILITY AND EQUITIES

Total Liabilities	\$1,910,153
Total Equity	\$34,144,781

TOTAL LIABILITIES AND EQUITIES

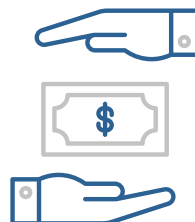
\$36,054,934

GIVING



\$3.37
MILLION

Gifts to CKCF



\$1.86
MILLION

Grants Awarded

GRANTS



142
Grant Recipients

FUNDS



20
New Funds

215
Total Funds

SCHOLARSHIPS



142
Students Awarded
Scholarships

\$344,900
Scholarships Awarded

ENDOW KENTUCKY & KYGIVESDAY



\$5.4 MILLION
In Kentucky Tax
Credit Gifts Since 2011



\$154,228
Raised for Local Nonprofits

\$759,419
Since 2016

Board of Directors



Lindsey Alicna



Drew Ballard



John Beavin



Ann Carnes



Chris Carter
Secretary/Treasurer



Janna Clark



Jake Darabos



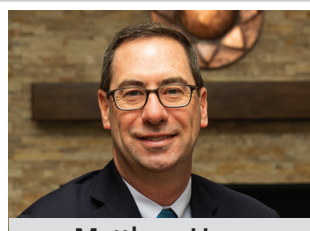
Ed Durnil



Cliff Fowler



Tehmina Haider



Matthew Hess
Board Chair



Emmet Holley



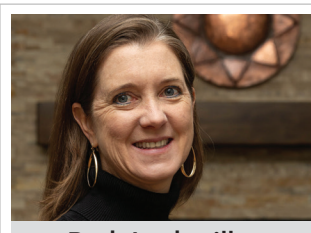
Dustin Humphrey



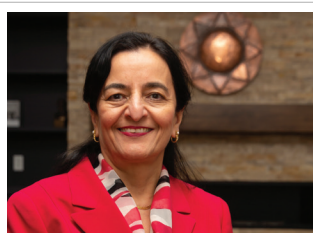
Tom Hustead



Greg Lee



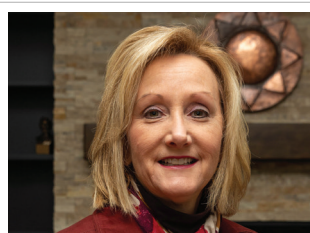
Beth Lochmiller
Vice Chair



Daksha Mehta



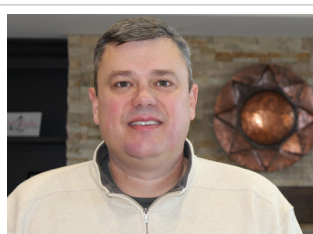
Heidi Patterson



Jamie Sizemore



Davette Swiney



Earl Wright



Excellence. Accountability. Impact.™



Let's Do Some Good Today!

200 Jim Owen Drive
Elizabethtown, KY 42701

RETURN SERVICE REQUESTED



MISSION STATEMENT

Central Kentucky Community Foundation is the philanthropic focal point in the region, serving as a resource, leader and catalyst to people who wish to improve life in their community.