



Let's Do Some Good Today!

200 Jim Owen Drive  
Elizabethtown, KY 42701

RETURN SERVICE REQUESTED

## MISSION STATEMENT

Central Kentucky Community Foundation is the philanthropic focal point in the region, serving as a resource, leader and catalyst to people who wish to improve life in their community.

270-737-8393 | [ckcf4people.org](https://ckcf4people.org)





# What creates a **connection**?

The stories in this report represent the connections of people and organizations, ideas and opportunities, resources and needs. Opportunities abound in the region for our communities to prosper; a prosperity of services and experiences that can only be realized through the connections we have with each other and our giving spirit. Where does that connection begin? It begins with each one of us. We can each play a role in helping our community prosper by making a connection, an introduction, or sharing an idea across organizations and sectors. We hope through these examples you will see an idea that causes you to ask a question, learn more and engage with others so that you make connections for the betterment of our communities.

## **What in our community matters to you? What would make a difference in that area of community life?**

Start with a conversation. Share your ideas, concerns and dreams and see who comes alongside you to make a difference. The following stories all began with that conversation and the connection of people who shared a passion. The connection that may have begun over a cup of coffee or a group text, a meeting or after school event. It is in those commonalities where we find people who will be part of expanding our ideas and connections to make more possibilities for our community.

*We are here for you, when you are ready to connect with us on what matters to you.*



Davette B. Swiney  
*President and CEO*

Matt Hess  
*Board Chair*

*CKCF President and CEO Davette B. Swiney and CKCF Board Chair Matt Hess*



# Celebrating Community Philanthropy -

## *finding that human connection*

Whether it’s creating an educational starting point for youngsters and empowering parents along the way, providing a financial lifeline to nonprofit organizations or honoring the legacy of community members, the in-person Celebrating Community Philanthropy program in September touched on all of that and so much more.

*It was indeed a celebration of successes from around the region.*

“It’s been three years since we were here and last connected in person with you for Celebrating Community Philanthropy,” said CKCF President and CEO Davette B. Swiney.

“We missed it; we missed you. In 2020, you got to see a virtual program, but we didn’t get to see you – other than as numbers of viewers. That’s not a real connection. It might be a technical connection, but it’s not a human connection.”

The program provided attendees with an up-close look at some of the many programs CKCF offers showcased on the following pages.



Former CKCF President and CEO, Al Rider, and Former Board Chair, Dr. Jeff Richardson, catch up during lunch at Celebrating Community Philanthropy.



CKCF Board Chair Matt Hess welcomed the crowd to start the program.



Emily Hyde's son, Finley, demonstrated one of the many activities from Get Ready! Camp during CKCF's Celebrating Community Philanthropy.



St. James Catholic School Ambassadors volunteered to be servers during the event.



# Granted impacts local nonprofit in multiple ways

Wesley Hilltop House opens its doors to host a myriad of camps throughout the year. These camps offer children in the Glendale Hill area of Elizabethtown programming as well as at least one hot meal a day when school isn't in session.

One afternoon a mom came to pick up her daughter from camp. She was exhausted. She had worked a double shift. Paige Waldron, Executive Director of Wesley Hilltop House, handed her a cup of coffee, offering a break and friendly chat, while they waited for camp to end.

The mom noticed a SMART board, an interactive learning tool, that was purchased by Wesley Hilltop House with funding from CKCF's Granted Program in 2021.

"What's that thing?" she asked.

As Waldron explained the SMART Board, the mom looked skeptical, "It must be expensive. You got this for kids AND you let them touch it?"

Waldron laughed and replied, "Of course we let them use it! The kids are worth it, right?"

"They are," the mom replied a bit teary-eyed. "Not everyone gets that though."

Moments like this remind Waldron why the work at Wesley Hilltop matters.

"To the people who come to Wesley Hilltop House, this board is more than a luxury item, it says that

we care about this community and want to invest in their future," said Waldron. "It's a symbol of worth and a sign that we believe in them."

The SMART (Promethean) Board was purchased as an interactive educational tool and virtual learning platform to help teachers engage with their students outside the classroom. A surprising benefit of the Board has been intergenerational learning. Many of the 75 senior citizens who meet at Wesley Hilltop are unsure of new technology. During community dinners, staff noticed children explaining the capabilities of this new "fancy TV" to members of the 65 and older bunch. The seniors have begun to incorporate the board into their group for "how to" lessons, calling bingo numbers, and even karaoke. In fact, some of the seniors have gotten so brave they have retired their flip phones and requested guest speakers to help them use their smartphones and create TikToks. On weekends, the SMART Board is used for community movie nights ... complete with popcorn.

"This purchase far exceeded the outcome of our project," said Waldron. "We knew the board would have a big student impact... we didn't realize it would bridge the gap between generations."



A SMART (Promethean) Board is an interactive whiteboard that can project images from a computer and interact with the board through touch.

## 2022 GRANTED RECIPIENTS

Bethany Haven	Grayson County Alliance	Project LEARN
Breckinridge County United	Grayson County Ministerial Association	SpringHaven Inc.
Community Health Clinic	Helping Hand of Hope	The Lincoln Museum
Good Samaritan Center	Mission Hope for Kids	Warm Blessings

In the second year of Granted, CKCF awarded \$56,146 to 12 organizations.

For more information on Granted and how you can support projects, visit [ckcf4people.org](https://ckcf4people.org).





Debbie Childress, Executive Director for the Grayson County Alliance and Jamie Sizemore, Executive Director for Feeding America, Kentucky's Heartland were part of planning the Nonprofit Roundtable.

# Learning from each other was a big part of CKCF's Nonprofit Roundtable

Scott Turner doesn't think he has all the answers when it comes to raising funds for Hardin County Habitat for Humanity, or keeping volunteers continuing to show up at job sites to help build homes.



What he does know is that after the August Central Kentucky Community Foundation Nonprofit Roundtable "Convene, Connect, Collaborate" he has more ideas to help Habitat move forward and believes other organizations feel the same way.

The one-day event at CKCF's Home of Philanthropy in Elizabethtown also added to his network of nonprofit counterparts as they collectively work to help each other and those in need of their services.

"I hate re-inventing the wheel; so, to hear what others have used and worked is good. The collaboration of it was really good," the Habitat Chief Executive Officer said. "Some of the things I heard I may have never thought of doing. Some things that haven't worked for us, but they may work for others (nonprofits)."

While nonprofits branch out in various aspects of life such as food and shelter, they all seem to face many of the same challenges - especially when it



comes to finances and a steady volunteer base.

"Just as for-profit businesses have specific training and networking opportunities to advance the industry, nonprofits need the same resources," said Jamie Sizemore, who attended the event and is Executive Director of Feeding America, Kentucky's Heartland. FAKH serves 42 counties in central, south central and western Kentucky. "The pandemic presented many challenges for nonprofits and has really expanded our thinking that we are truly better when we work together and support the industry as a whole."

The Nonprofit Roundtable drew about 75 people from all nine counties in the CKCF region, and included several speakers for breakout sessions.

Stephanie Lamar, Director of Development at Sisters of Charity of Nazareth, said hearing ideas from others was valuable.

"The Nonprofit Roundtable event provided the opportunity to network with other nonprofits. I thoroughly enjoyed the breakout sessions and hearing from others who share similar issues. It was so refreshing to hear that we were not the only organization facing these challenges in the nonprofit world," said Stephanie Lamar.

The roundtable touched on various topics such as building a better financial picture, landing and maintaining a strong volunteer roster and staying mission focused.

The Nonprofit Roundtable opened with comments from CKCF President and CEO Davette B. Swiney and featured a keynote address from Warren Beeler, who has served as Executive Director for the Governor's Office of Agriculture Policy under Governors Matt Bevin and Andy Beshear.

Beeler praised the nonprofits for the important roles and impact they have in communities and said what nonprofits do every day is "amazing."

"If you look long enough, there's a win in every loss; you just have to find it," Beeler said. "... that's part of what nonprofits do daily. Finding that spark in people when they come to you with a dimmed light."

Turner was among those on the Nonprofit Roundtable workgroup who helped plan the event. He said some of the feedback he received from attendees aside from the benefits of learning from others and potential opportunities for their nonprofits, was to make it a regular event and multiple times each year.

"We all have needs, and the variety of organizations who came was good," Turner said. "We're hoping the next one is even bigger."

Swiney said CKCF was "thrilled" with the response to the roundtable and "gratified" by feedback from those who attended.

"This feedback gives us a good basis for what happens next," she said. "We know our nonprofit leaders want more opportunities to connect and learn together."



# Memorial fund honors Reding's legacy

Jeremy Hinton could talk about his late friend, Aaron Reding, all day – and then some.



Aaron Reding did not let ALS stop him from spending time with his family.

They were strangers before they arrived at the University of Kentucky in the early 1990s, became close friends, fraternity brothers, and so much more.

Farming is what bonded them in many aspects of life.

"I can't think of anybody who loved agriculture and farming as much as Aaron did," Hinton said. "He truly was a champion and servant leader from the time that I met Aaron as a freshman at UK. We just had a special bond, and he had a really strong love for the industry of agriculture."

Reding, 48, a married father of three, fought ALS for 17 years before he died in April 2022.

A group of Reding's friends, including Hinton, began talking about how to honor and continue his legacy.

"Our group had lots of ideas – too many ideas," said Hinton. "We know a lot about farming and agribusiness, but aren't experts in fundraising, tax deductions and fund administration."

As the idea took root, Jeremy knew where to turn for help.

"I was familiar with CKCF's work from previous projects and turned to them for guidance. I called late one afternoon and not only got all of my questions answered, but I also got some homework to help us focus our efforts and move forward with our idea," Hinton said. "The staff at CKCF helped us consider options and guide us in making decisions so we could most meaningfully honor our friend."

To honor their friend and continue Reding's legacy in farming, the Aaron Reding Memorial Fund will support

youth development programs in the agriculture field, honoring Aaron's passion for the future of agriculture.

Hinton said the way Reding never let ALS "define him" is one of many reasons that inspired the group to create the fund to help youngsters in farming.

"When he came home to the farm, he wasn't satisfied to farm on a small scale, he wanted to grow his operation. It wasn't necessarily because he wanted to be the biggest and the best, but it was because he wanted to show others that it could be done and build an operation that could support his family down the road."

Hinton said in coming up with the idea for the memorial fund, the group heard from people they hadn't heard from in several years.

"It really meant a lot to re-establish those connections," he said. "Coming together and connecting around friendship, common love for agriculture, and being able to support Aaron's family."

At the end of 2022, more than \$70,000 had been raised for the fund from more than 80 donors with contributions ranging from \$10 to \$10,000.

"The outpouring of support for the Aaron Reding Fund speaks to his life and impact," said CKCF President and CEO Davette B. Swiney. "But more important than the dollars is the shared connection this fund has created amongst friends and the connection that will carry forward to the youth and organizations that will benefit from the Aaron Reding Memorial Fund."

Reding lived in Hodgenville, was owner and general manager of Homestead Family Farms, and was a strong proponent of next-generation farming.

"To connect with his love for farming, and invest back into youth going into agriculture," said Swiney, "I think that is a really special tribute that aligns with his life."

“

*Legacy is not leaving something for people. It's leaving something in people.*

- Peter Strople



Hinton and Reding's friendship started at University of Kentucky in the 90's.

## Interested in setting up a memorial fund?

Honor the life of a loved one with dignity, respect, and in a way that gives back through a memorial fund. Every dollar gifted in your loved ones honor will help empower their passions or favorite organizations to live on. Shape a legacy of impact and create a memorial fund today.

Contact CKCF at 270-737-8393 or [info@ckcf4people.org](mailto:info@ckcf4people.org) to learn more.



# FACES IN PHILANTHROPY



Traci Life from Feeding America shares some thoughts with Janice White of Sisters of Charity of Nazareth during table topics at the Nonprofit Roundtable in August.



Bennie Lou Hammons (middle) and her son Ernest Hammons (far left) present Gavin Gray the Glen D. and Bennie Lou Hammons Family Scholarship at Celebrating Achievement. Gavin's parents are John and Jessica Gray.



Paige Waldron, Executive Director of Wesley Hilltop House, and Kim Iman, Cofounder and Director for PURE, Inc. got a surprise from Heels Together notifying them they were grant finalists this past year.



Students from St. James Catholic School are excited to hold the check they were awarded for being a Kentucky Gives Day top performer. Kentucky Gives Day is a 24-hour online fundraising event bringing charities and Kentuckians together for a powerful day of action. CKCF and the Kentucky Nonprofit Network Inc. bring Kentucky Gives Day to our region each year.



Mike Bowers and Barbara Proffitt catch up during the Granted Partners in Philanthropy event held at the Home of Philanthropy last summer. Granted is a competitive grants program open to area nonprofits to enhance communities by uniting people and investing resources through philanthropy.



Representatives from the Warm Blessing's board attended the announcement of their established endowment with CKCF this past spring. CKCF has 17 endowed funds with area nonprofits. From left to right, Neal Gibbs, Chris Leccese, Dawn Cash, Davette Swiney, Donielle Lovell and Tim Hahn.





Best friends reconnect at the Get Ready! Camp 10th Anniversary reunion.



Get Ready! Camp provides a unique learning experience for children and parents to discover how they can easily learn together.



Community involvement is key to elevating interest in early learners.



Chelsea Ritchie, a Get Ready! Camp teacher, performs a science experiment with campers this past summer. Get Ready! Camp offers children, ages 0 - 5 years old, and their parents the opportunity to discover the exciting world of learning together.

# Get Ready! Camp

## Helps shape a child's educational foundation

What's the secret recipe to get children to enjoy learning during the summer? Get Ready! Camp must hold that secret based on the large and returning attendance at the summer program each year.

Led by Central Kentucky Community Foundation, Get Ready! Camp is a free community program held each summer for families with children birth to five years old, designed to engage children and families in learning from an early age.

For Emily Hyde and her three children, they have seen firsthand how Get Ready! Camp helps to create an educational foundation for families.

"For my family, summertime is almost synonymous with Get Ready! Camp," Hyde said.

How did Hyde know her children liked Get Ready! Camp?

"They would ask to go everyday," she said. "In the evenings, they would show their father what they did at camp that day - a new song and movements that went along with it, or the writings they were so excited about when they finally learned how to spell their name and do it with their own penmanship. It

was neat to see the experience through their own eyes."

Hyde's eighth-grade daughter, Ava, attended numerous Get Ready! Camps over the years as a camper and later as big sister. She said her time spent during the summers created a "wonderful memory."

"It really made a difference in the success for Ava," Hyde said.

Hyde was pleased to find a quality, learning experience in the community when her family moved here from Texas.

"It is one of the first community programs we attended," said Hyde. "It was good to see a community value families and education at an early age."

The camp, which began in 2011, is a community effort to strengthen and support early childhood education efforts for families.

"We couldn't have Get Ready! Camp without many community partners - Hardin County and Elizabethtown Schools, ECTC, Early Childhood Regional Collaborative and donors who support the program," said CKCF President and CEO Davette B. Swiney. "Early Childhood can be a challenging investment to make.

The studies and economics tell us it works, but it is a long-term payoff."

Carla Kuhn, principal at Panther Academy and Early Learning Childhood Center in Elizabethtown, said children learning early in life is critical to their educational development.

"There's so much learning that happens from birth to 5," she said. "There's a ton of research that shows you that they are sponges; they're absorbing everything."

Kuhn said there is no substitute for learning early, and it likely doesn't look like what people expect.

"Early childhood education is all about building that capacity to want to learn and grow and experience things you're doing at a very early age, and they learn to love school," said Kuhn. "It's not about learning facts and figures."

Early childhood learning takes many forms, and Get Ready! Camp is just one resource available for our community.

"We think about a child's early years, we often focus on physical development - it's what we can see and is easy to measure," said Swiney. "We often overlook the importance of brain development. We nourish the body with physical exercise and nutrition. What are the opportunities to help families and support

parents to nourish the foundation for learning in our children?"

Community partnerships beyond the education sector, are essential to provide opportunities for families to have these experiences with their children. There are opportunities in healthcare, public spaces and even businesses to incorporate simple, easy learning into the places people already visit.

"That is how we will elevate early childhood education in our community," said Swiney.

Last summer, Get Ready! Camps were held at Panther Academy, Heartland Elementary, North Park Elementary and Creekside Elementary schools.

What are the opportunities to help families and support parents to nourish the foundation for learning in our children?

Community partnerships beyond the education sector, nonprofit and philanthropic sector are essential. There are opportunities with healthcare, restaurants, government and recreation to do simple, easy things to incorporate learning into the places people naturally go. That is how to elevate early childhood education as a community.

Since Central Kentucky Community Foundation launched the local summer Get Ready! Camp, 3,963 children and 2,725 adults have attended the various camps.



## Celebrating Achievement – Extending the celebration to Bardstown



Lila Foster, Tyler Foster's mother, hugs recipient Anna Claire Carwile as she accepts her scholarship award.

Over 100 people attended the first Bardstown Celebrating Achievement program, where 42 students received college scholarships and got to meet the donors who made their scholarships possible.

CKCF has offered scholarships to area students for over 50 years. The program has grown, especially since the launch of Scholarship Central, leading CKCF to expand the Celebrating Achievement program to an event in Bardstown. There was no special guest speaker needed; the stories shared by generous donors and the scholarship recipients highlighted the evening.

One of those scholarships was the Tyler Foster Memorial Scholarship. Tyler graduated from Nelson County High School and was an accounting and finance major at the University of Kentucky when he died in 2015.

"I would like to thank the Fosters for their generous donation to my education," Anna Claire Carwile said. "I am both honored and blessed to have received the Tyler Foster Scholarship and hope to honor his memory through my hard work as a student and athlete at Campbellsville University."

Scholarships were presented to students from LaRue, Marion, Nelson and Washington Counties at the program in Bardstown. At a second Celebrating Achievement program in Elizabethtown scholarships were presented to students from Breckinridge, Grayson, Hardin, Hart, and Meade Counties. Collectively 136 students received 175 scholarships totaling \$346,000.



Lakin Koch from Bethlehem High School reads through the Celebrating Achievement program prior to receiving the Ann Ewing Memorial Scholarship.



Conversation between recipients and donors was the highlight of the evening.



Jennifer Ryan (middle) presents a check to Heels Together investors during the workout with Chellsie Memmel.

## Becca's Place Gymnastics connects serving others to Heels Together's mission

Jennifer Ryan wears her heart on her sleeve. The co-owner of Becca's Place Gymnastics with her sister Jessika Bohannon-Ferris, she cares deeply about her gymnasts and even deeper about giving back to her community.

Serving others is a core value at Becca's. They take several opportunities throughout the year to reinforce the importance of service.

In 2022, Becca's hosted Olympian and World Champion gymnast, Chellsie Memmel, to train their athletes. Chellsie is passionate about helping women and girls thrive and never give up their dreams. Her platform of female empowerment made Ryan automatically think of Heels Together. Adding a personal training experience with Memmel created a fundraising opportunity that raised \$11,300 for Heels Together and the Youth Sports Fund of Hardin County. Heels Together is a women-led initiative to support women and girls and the Youth Sports Fund helps reduce the financial barrier for recreational sports for families.

The mission of Heels Together resonates with Ryan on a personal level.

"I have my own Heels Together type story," explained Ryan. "About 10 years ago, I had just gotten married, was pregnant, student teaching, and coaching at the gym. We were struggling financially. The gym threw me a baby shower. I received a "mack daddy" car seat I knew I could never afford from a mom I didn't even know. I was amazed that a person who didn't even know me could care about me that much. That mom, Beth Avey, has become a mentor and close friend. She believes in me and that is a true gift."

This fundraiser is one of many ways Becca's gives back to the community. Ryan credits their

philanthropic spirit to her parents.

"We were raised to have a servant's heart," she said. "When my parents ran the gym 20 years ago, cheer teams paid to train here. At the end of their season, my parents gave 10% of the fees parents paid to the teams. That made an impact on me."

"Oftentimes when we think about giving, we think about how much can we write the check for," said Davette B. Swiney, President and CEO of CKCF. "That's a natural place to start. However, when a business like Becca's, takes a step back and asks what do we have to offer that can make more happen, they create ways for other people to be involved, to give and ultimately more dollars for what they care about than they could do themselves."

"Our business model is a little unconventional because everything is driven from our hearts, but it has served us well," said Ryan.

Their key for giving back has been to find organizations that are important to them and make those connections with others who can help with its success.

"We chose to work with CKCF and Heels Together because we know they would exceed our expectations," said Ryan. "CKCF puts your mind at ease and they give you the flexibility to be as involved as you would want. Every time we've come to CKCF with an idea, they give us options to see our ideas come to fruition."

Ryan judges Becca's success, not only by the medals her gymnasts win, but by the lasting impact on their lives through serving others and giving back to the community that gives her so much.

"That's my gold medal."



# 2022 CKCF Funds

### Charitable Remainder Trust

- Llewellyn Charitable Remainder Trust Funds (2)

### Community Enhancement

- Florence Y. Mason Fund
  - Joe and Lenelle Hays Community Spirit Fund
  - Marvin and Joyce Benjamin Fund
- Ruby N. Deitchman Fund
  - Tony/Becky Bishop Community Fund

### Donor Advised Funds

- Anne and Carl Swope Fund
  - Anne and Carl Swope Fund for Endow KY
  - Anonymous Funds (3)
  - Bob and Ella Mae Wade Fund
  - Bowers Family Endowment Fund for Endow KY
  - Byler Family Fund
  - Carter Family Fund
  - Carter Family Fund for Endow Ky
  - Chad and Amy Brown Donor Advised Fund for Endow Ky
  - Conrad Hotopp Family Fund
  - Dennis and Lisa Parrett Family Donor Advised Fund
  - Dr. Chris and DaneNell Knight Fund
  - Dr. Robert E. and Rita H. Robbins Fund
  - Ed and Georgia Gordon Donor Advised Fund
  - Ed and Georgia Gordon Endowed Donor Advised Fund
  - Fisher Family Fund
  - Fowler Family Fund for Endow Ky
- Fripp Family Fund for the Future**
  - Godfrey Family Foundation Fund
  - Gourmand's International Culinary Donor Advised Fund
  - James and Patricia Schory Fund
  - John and Ann Fisher Charitable Fund
  - Nandi's Smile Fund
  - Nelson and Opal Gonterman Charitable Fund
  - Prather Family Fund
  - R. and N. Corbett Wellness Fund
  - Ray Family Fund for Endow Ky
  - Ryan-Dudgeon Donor Advised Fund
  - Scott and Monica Kisselbaugh Donor Advised Fund
  - Scott and Monica Kisselbaugh Donor Advised Fund for Endow Ky
  - Swope Family Fund for Endow Ky
  - Terry and Bonnie Patterson Donor Advised Fund
  - The Wade Fund for Endow KY
  - William and Joyce Godfrey Fund for Endow Ky

### Education

- Bardstown Independent Schools Endowment Fund
  - Charles and Diane Logsdon Endowment Fund for ECTC**
  - Elizabethtown Community and Technical College Funds
  - Campus Improvement - ECTC Fund
  - Capital Projects - ECTC Fund
  - Capogna Science Fund
  - ECTC - Faculty/Staff Development Fund
  - Elizabethtown Community College Fund
  - Endowment for ECTC Faculty/Staff Excellence
  - Elizabethtown Educational Foundation
  - Financial Foundations Fund
  - Hardin County Library Duff Book Fund
  - Hardin County Library Mitchell Book Fund
- Hardin County Public Library Fund
  - Hardin County Schools Early College and Career Center
  - Hardin County Schools Partnerships Grants Fund
  - Hardin County Schools Support Fund
  - Imagination Library Hardin County**
  - Kenneth and Nannette Johnston Endowment Fund
  - Kennard and Melva Peden Trust
  - KySTE Agency Endowment Fund
  - Mildred Rowlett Education Fund
  - Nannette S. Johnston Impact Fund for Hardin County Schools
  - Nelson County Schools Endowment Fund
  - Samuel G. Jenkins, Jr. Fund for KET
  - Tai Sy Le Memorial Fund

### Field of Interest

- Donna Mulligan Fund
  - Heels Together Endowment Fund
- Heels Together Grant Fund

### Health and Human Services

- Baptist Health Foundation Hardin, Inc.
  - Bishop Charitable Fund
  - Central Kentucky Cares Fund
- Hardin County Cares Fund
  - Washington County Association for the Mentally Handicapped
  - Legacy Fund

### Historical Preservation

- Brown-Pusey Fund
  - Holbert Family Fund for Brown Pusey House
- Sallie W. Pusey Fund
  - William A. and Sallie W. Pusey Fund

### Nonprofit Organizations

- CASA - Court Appointed Special Advocates Fund
  - Central Kentucky Community Foundation Endowment Fund
  - Clarity Solutions Fund
  - Elizabethtown Police Foundation
  - Feeding America, Kentucky's Heartland
  - Friends of the Hardin County Animal Shelter
  - Nancy Casey Memorial Endowment Fund for FOHCAS**
  - Greenspace Endowment Fund
  - Hardin County Habitat for Humanity Fund
- Harold and Dolly Jackson Endowment for Magnolia Cemetery
  - Designated Endowment Fund
  - Hart County Community Fund
  - Helping Hand of Hope Fund
  - Mission Hope For Kids Fund
  - Mission Hope For Kids Designated Endowment Fund
  - Silverleaf Endowment Fund**
  - SpringHaven Designated Endowment Fund
  - United Way of Central Kentucky Fund
  - Warm Blessings Endowment Fund**

### Religious

- Ann Young and Claude Morgan Roebuck Fund for Glendale United Methodist Church
  - Ernest and Wilma Rider Endowment Fund for Lucas Grove Baptist Church
  - First Christian Church Endowment Fund
  - First Presbyterian Legacy of Faith Fund
  - First Presbyterian Legacy of Faith Fund for Endow KY
- First Presbyterian Legacy of Hope Fund
  - Grace Heartland Church Endowment Fund
  - Joe and Dorothy Brothers Designated Fund
  - Macedonia Baptist Church Fund
  - St. James Catholic Church Endowment Fund
  - St. James Catholic School Tuition Assistance Fund
  - Valley Creek Baptist Church Designated Endowment Fund

### Scholarships

- Amy Alicna Scholarship Fund
  - Andrew Kyle Mykytiuk Memorial Scholarship
  - Angela Kirchner Memorial Fund for St. James Catholic School
  - Ann Mackin Ewing Memorial Scholarship
  - Audrey Shoulders Memorial Scholarship Fund
  - BCD Inc. and J. Michael Salsman PE Construction Scholarship
  - Becca Bohannon Memorial Scholarship Fund
  - Bob Brown Family Scholarship
  - Brent Wagoner Excellence in Education Scholarship Fund
  - Brewer Memorial Scholarship Fund
  - Brianna and Brice Taylor Scholarship Fund
  - Carol Withrow Nursing Fund
  - Cindy Ethington Memorial Scholarship
  - Col. Larry and Betty Sue French Scholarship Endowment Fund
  - Col. Michael Baymor Scholarship Fund
  - Dana Marie Underdonk Bryant Memorial Scholarship Fund
  - Deana's 7th Inning Stretch Scholarship
  - Dennis and Lisa Parrett Family Scholarship Endowment Fund
  - Doug and Lisa Cantrell ECTC Faculty Scholarship Fund
  - Dr. and Mrs. E.H. Durnil Scholarship Fund
  - Dr. Don Berry Memorial Scholarship
  - Dr. Gary King Sharp Memorial Scholarship Fund
  - Dr. Jim Owen Scholarship Fund
  - Dr. Larry and Mary Lou Hall Scholarship Fund
  - Dr. Linda Mayhew STEM Scholarship Fund
  - Dustin Matthews Memorial Scholarship Fund
  - Earl Day Legacy Scholarship Fund
  - Elizabethtown High School Class of 1966 Scholarship Fund
  - Feleshia Denham Memorial Scholarship**
  - Glenn D. and Bennie Lou Hammons Family Scholarship Fund
  - Gourmands International Culinary Scholarship Fund
  - Hardin County Bar Association/Teen Court Scholarships
  - Hardin County Cattleman's Association Scholarship
  - Hardin County Lacrosse Scholarship Fund
  - Hardin County Principal Organization Scholarship
  - Harold and Cynthia Carter Memorial Scholarship Fund
  - Hart County Scholarship Alliance Fund
  - Heart of Kentucky Realtors Association Scholarship
  - Helen P. De Graffenried RN Fund
  - J.R. and Carrie Lee Edwards Scholarship Fund
  - J.T. Wigglesworth Automotive Scholarship Fund
- Jacob Barber and Katarina Peeters Memorial Scholarship Endowment Fund
  - James and Betty Holeman Scholarship Fund
  - John Dink Scholarship Fund
  - Juana Alicia and Gilberto Rosas Memorial Scholarship Fund
  - Kacy Lee Johnson Memorial Scholarship Fund
  - Kathy Mattingly Kidwell Memorial Scholarship Fund
  - Kenny Jones Memorial Scholarship Fund**
  - Lanny Skees Memorial Scholarship Fund
  - Larry and Carol Kimberlain Scholarship Fund
  - Lisa Hays Charness Memorial Scholarship Fund
  - Llewellyn Scholarship Fund
  - Mac Michaelis Scholarship Fund
  - Martha Jane Hamilton Nursing Scholarship
  - Mike and Sharon Bell Scholarship Fund
  - Mike Oveson Memorial Scholarship Fund
  - Mr. and Mrs. Lewis H. Hall Scholarship Fund
  - Nelson County Schools Support Foundation Scholarships
  - Nugent McGrew Scholarship Fund
  - Obviously Analiese Scholarship Fund
  - Owen J. Estes Memorial Scholarship Fund
  - P.L. Mansfield Award for Excellence in Mathematics Scholarship Fund
  - Patrick Eldon Bergman Memorial Scholarship Fund
  - Patty Lirot Memorial Scholarship
  - PFC Sammie Phillips Memorial Scholarship Fund
  - Phillip "Duke" and Florence Deeb Owen Scholarship
  - Rae of Sunshine Kentucky Scholarship
  - Randall Clauson Scholarship Endowment Fund**
  - Randy Pinkston Memorial Scholarship Fund
  - Ray Harm Art Scholarship Fund
  - Robin Bohannon Memorial Scholarship Fund**
  - Rylee Marie Razon Memorial Equine Scholarship Fund
  - Schmidt Family Scholarship Fund
  - Scholarship General Funds
  - Taylor and June Spaulding Memorial Scholarship Fund
  - Taylor Martin Scholarship Fund
  - Trooper Ponder Memorial Scholarship Fund
  - Tyler Foster Memorial Scholarship Fund
  - Van Earl and Ruddell Allen Scholarship Endowment Fund
  - Wendy Elaine Trenum Memorial Scholarship

### Unrestricted

- M.A.D.E. Fund

### Youth Development

- Aaron Reding Memorial Fund**
- Lahoma Routt Fund
- Youth Sports Fund of Hardin County

Funds opened in 2022 are in bold.

If you are interested in learning more about these CKCF Funds or staring your own fund, please contact us at **270-737-8393** or **info@ckcf4people.org**.



# CONNECTIONS BUILD STRONGER COMMUNITIES

We're proud to call ourselves a community foundation because we work with individuals, groups and organizations across Central Kentucky to build a better future. For more than 60 years, people have partnered with us to enhance their connection to make a lasting impact on their community.

## WAYS TO PARTNER

### Support our Community Funds

CKCF is honored to have fostered partnerships with area organizations to establish funds. Make a gift of any size to support a fund, scholarship or grant program. We have a variety of funds that meet many community needs. You might just find what you want to support right here! See the complete list of CKCF funds on page 18 and 19.

### Make a Connection

- Host an event to raise awareness and/or money for a CKCF community fund or project.
- Volunteer in specific areas such as a scholarship evaluator or blood drive coordinator.
- Be a CKCF Champion; share how you see CKCF's impact on other people in our community.

### Connect with your Community Forever

Consider a gift of 5% in your estate plan and your community will benefit forever. The best communities are more than excellent places to live, the best communities are built through the generosity of people. An Estate Gift is a way to insure your charitable support continues in perpetuity.



Access this QR code to read more about CKCF funds and donate.

## Partnerships enhance sustainability initiative

The vision behind Dow's \$425,000 sustainability grant to CKCF is coming to life literally and figuratively as new partners help expand the work.



The Dow Orchard steering committee did some "field work" by visiting a community orchard in Bloomington, Indiana.

### Waste Reduction

One component of the grant funds waste reduction strategies. A natural starting point for the project funded by a manufacturer was what they know best - the industrial sector. With Dow's leadership, a group of industrial leaders convened to explore community level ideas and strategies.

Through brainstorming and ideation, the group narrowed the many ideas to three for further exploration. During 2022, one of those went from an idea to implementation.

The industrial Sustainability Swap created a way for local manufactures to make items that would otherwise go into the landfill, available to other manufacturers. The Sustainability Swap fosters a regional network of businesses with a shared goal of finding and providing repurposing solutions for unused industrial materials. It is a transaction portal to not only reduce the amount of industrial waste in area landfills, but also improve efficiency and create cost-saving measures among the regional industrial sector.

The Sustainability Swap is housed on the Elizabethtown Industrial Foundation website and serves as another resource for the local manufacturing community, making it easier for industry to be environmentally conscious.

"The Sustainability Swap is about reducing our waste," said Nick Powell, Dow Team Lead. "It is also about shaping how we think and prioritizing reducing our waste. In this instance, not only are we reducing waste, but the waste being reused stays local, reducing transportation and recycling costs."

### Orchard

The second component of the Dow grant funds a community orchard. Initial plans were to locate the Dow Orchard adjacent to CKCF. As community partners continued to research and make plans for the Orchard, it became obvious that the property wasn't an ideal location. The group started looking for an alternative and approached the City of Elizabethtown about locating the Orchard in the Nature Park.

"We are pleased to partner with Central Kentucky Community Foundation on the development of an orchard area in our Nature Park," said Elizabethtown Mayor Jeff Gregory. "We continue to add to and improve our parks system to enhance life quality in our community. To have the opportunity to collaborate with a great foundation like CKCF to beautify and environmentally improve that area is a win for everyone."

A community effort to grow relationships, collaboration, community, knowledge, planting partners and food. The community orchard offers a way to engage people with their food supply, nature, and the life cycle. The orchard involves the public, nonprofit and private sectors, engaging the community in a living example of sustainable food supply and long-term community engagement.

The final orchard design is complete, and the first round of trees will be planted in 2023. **Individuals and organizations interested in being involved with the orchard can contact CKCF at 270-737-8393 or [info@ckcf4people.org](mailto:info@ckcf4people.org).**



For more information go to: [sustainabilityswap.eifky.org](https://sustainabilityswap.eifky.org)



## 2022 FINANCIAL POSITION

### ASSETS

2022

#### Current Assets

Investment Funds \$27,496,761

Cash Accounts \$1,099,723

Total Current Assets \$28,596,484

Total Fixed Assets \$2,376,165

**TOTAL ASSETS \$30,972,649**

### LIABILITY AND EQUITIES

Total Liabilities \$1,837,045

Total Equity \$29,135,604

**TOTAL LIABILITIES AND EQUITIES \$30,972,649.00**

### GIVING



**\$148,925**

Raised for Local Nonprofits

**\$605,191**

Since 2016



**\$4.6 Million**

In Kentucky Tax  
Credit Gift Since 2011



**\$1,669,760**

Total Donor Gifts to CKCF



**11**

New Funds



**196**

Total Number of Funds



**\$346,000**

Scholarships \$  
Awarded



**136**

Students  
Awarded Scholarships



**\$1,075,856**

Grants \$  
Awarded



**83**

Number of  
Grant Recipients

## Board of Directors



Lindsey Alicna



Drew Ballard



John Beavin



Ann Carnes



Chris Carter



Ed Durnil



Cliff Fowler



Tehmina Haider



Matthew Hess  
Board Chair



Emmet Holley



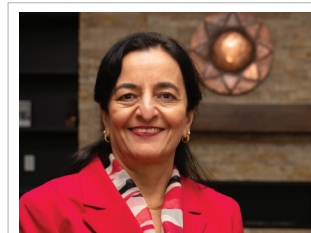
Dustin Humphrey



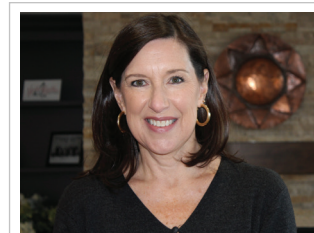
Greg Lee



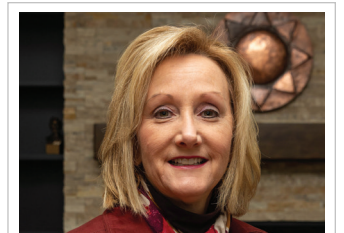
Beth Lochmiller



Daksha Mehta



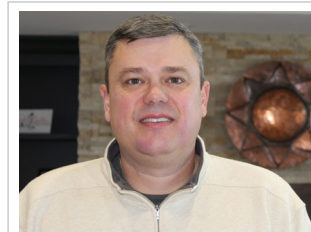
Heidi Patterson



Jamie Sizemore



Davette Swiney



Earl Wright



Excellence. Accountability. Impact.™