



Central Kentucky Community Foundation
2012 Annual Report

Central Kentucky Community Foundation

Board of Directors



Terry Patterson
Vice Chairman



Dr. Jeffrey Richardson
Secretary



Ben LaRue
Treasurer



Kevin Addington



Steve Arel



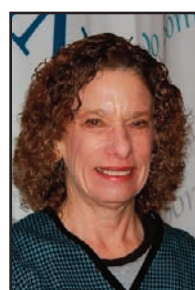
Rick Baumgardner



R. Terry Bennett



Teri Bennett



Paula Cohn



D. Michael Coyle



Tehmina Haider



Brian Kerr



DaneNell Knight



State Senator Dennis Parrett



Ronnie Pence



Barbara Proffitt



Kevin Ryan



Jim Schory



John Scott



D. Dee Shaw



Kevin Shurn



Ted Stiles



Bob Wade



Jill Wade

PEOPLE

Making a difference forever



Tommy Turner
Board Chairman

Thinking about what you wish to accomplish beyond your lifetime requires a trusted *Forever Partner*.

Central Kentucky Community Foundation (CKCF) brings *people* together around what matters most: connecting the ideas, initiatives and dreams they wish to support well into the future.

As inspirational author Wes Jackson said, "If your life's work can be

accomplished in your lifetime, you're not thinking big enough."

We listen as *people* frame expectations for a future they will not experience, yet want to enhance. We focus on the donors' intentions, objectives and their goals. We serve as a partner to assist them in realizing their dreams.

"If your life's work can be accomplished in your lifetime, you're not thinking big enough."

Wes Jackson

The motivation for donors to give through Central Kentucky Community Foundation comes from the heart. Many are driven by their personal values and a desire to improve their community.

We only exist because of the many *people* in this region who care enough to create funds to make our community better. How fortunate we are to have so many *people* committed to doing just that -- helping our community continue to improve each day by their financial commitment to its future.

"Explore all possibilities, create extraordinary relationships, and make every conversation count."

Marcia Wieder

This is what *Central Kentucky Community Foundation* aspires to do, every day. We help *people* explore ways to give back to their community and accomplish what they alone cannot. We help people answer their deepest question: "Has my life mattered?"

We assist *people* who have decided it's time to fund their dreams and become a significant contributor to their community. It is often a long journey from having an idea to action - action that dedicates a lifetime of financial resources to support what matters.

CKCF is a catalyst for the realization of *people's* dreams. We provide a customized giving solution to help people support multiple charitable efforts.

Central Kentucky Community Foundation completed its first year of service in 2012. While CKCF is the newest Community Foundation in Kentucky, it has enjoyed 52 years of serving educational, community and economic development initiatives as

North Central Education Foundation. Over the years, every donor and the funds they established help improve some aspect of *people's* lives. Often it's increasing educational opportunities such as *Get Ready!* for children birth to five, or aiding teachers in K-12 schools, providing scholarships for college students or enriching faculty and staff development. Other funds address urgent community issues or seize opportunities for community growth. At the heart of our work is assuring our donors' desired results are achieved.

We can help you establish a fund to match your charitable interests or direct you to one of our existing funds supporting a variety of community interests.

Make a difference - be a contributor.



Al Rider
President/CEO



people connected by geography... *and to each other*

A concerned call from an attorney: “I have a client that doesn’t know where to turn. Can you help her?”

When we met, her burden was obvious and heavy. After recently losing her husband, she had decisions to make, business to handle, and things she wanted to do. Most importantly, she wanted to honor the memory of her husband. And through all of this, she was grieving.

We listened.

We learned what she wanted to accomplish.

We understood why this mattered to her.

We perceived what was important to her husband.

We worked with her to establish a fund that best reflected the life of her husband and what was important to him. She shared what a good and giving person he was, and now this fund will share his memory in the community forever.

How many people will benefit from this generous gift? Her memorial to her husband will be measured by its impact on all of us. Direct beneficiaries and the community as a whole will benefit from the opportunities created by this fund.

When she walked out of our office, the biggest beneficiary was actually the donor. She accomplished her mission, and that burden was lifted from her. She went from not knowing where to turn for help, to CKCF where we customized a fund just for her. All of the details and execution of this fund will be managed for her forever. We were also able to help her receive additional tax savings for her gift.

We never know exactly what someone needs until we listen to their story to find out how we can assist them as they give back to their community. There is a place for everyone at CKCF, and we work with each donor to help lift their burden as they make a forever gift.

Using what we have to create what we want

What does our community foundation do?

CKCF envisions a region fueled by the caring actions of individuals and businesses whose resources endow the region with ample funds to sustain the dreams of its people.

CKCF envisions the nonprofit sector as a vibrant, contributing union of worthy causes, willing donors and people benefiting from its collective services.

CKCF envisions all three community sectors, public, private and social, working together in harmony to create synergy that invigorates the community.

Central Kentucky Community Foundation:

- Assists people with philanthropic interests to make a difference forever
- Guides people in pursuit of their charitable endeavors
- Provides personalized service tailored to each person's dreams
- Supports local issues, concerns and opportunities
- Grows philanthropy throughout the entire nonprofit area
- Accepts a variety of assets to support charitable causes
- Carries out bequests for people's gifts after their lifetime

How does our community foundation work?

- 1 Funds are established by people to benefit charitable efforts
- 2 People, businesses and organizations give to the funds
- 3 Funds grow through gifts and investing
- 4 Local people, using their knowledge of our community, decide how the funds can best impact different areas of our community
- 5 Grants are made to nonprofits and causes to help the community



CKCF Directors Barbara Proffitt, Ted Stiles and DaneNell Knight consider new initiatives for our community.

To accomplish its purpose, CKCF promotes philanthropy, builds a strong financial base for nonprofit organizations, and supports initiatives and innovation that strengthen the region.

The **CKCF Board** is a group of community leaders offering insights and real life experiences to assure donors the people they are working with know their community.

Why you deserve a Community Foundation

Central Kentucky Community Foundation was formed in 2011, when North Central Education Foundation incorporated members of The Heartland Community Foundation into its board to expand its focus and services in the region. Central Kentucky Community Foundation works to create an awareness of significant community issues, communicate them to the community and collaborate with partners to improve quality of life.

Our community is blessed with growth and progress. With growth come challenges. Charitable giving has become more sophisticated. While it was simple at one time to give directly to your favorite causes or organizations, it has since become more complex.

As laws and regulations change frequently, CKCF serves donors as a valued and trusted partner. CKCF can satisfy donors' many giving goals with one gift through one organization. CKCF can consolidate charitable giving to achieve diverse giving wishes.

Individualized philanthropy is at the core of CKCF. We will listen to your wishes and facilitate the most effective, meaningful way to make them happen throughout your life and forever.

Why give through Central Kentucky Community Foundation?

We are deeply committed to this community

We offer maximum tax advantages

We accept a wide variety of assets

We facilitate gifts to benefit multiple organizations and causes

We build endowments to benefit this community forever

Let's Do Some Good Today!

CKCF Mission

Central Kentucky Community Foundation is the philanthropic focal point in the region, serving as a resource, leader and catalyst to people who wish to improve life in their community.

“This has been super entertaining and fun, and at the same time, educational, just as much for the adults as it is for the children. I hope that we can enjoy this program next year.”

Get Ready! mother

***Get Ready!** focuses on learning for children from birth to age 5 and family awareness of how children learn through play.*



Central Kentucky Community Foundation brought together for the first time, key stakeholders around a comprehensive and intentionally designed program to deliver quality learning experiences at a crucial time in children's development. This collaboration among professionals, parents, childcare centers and community leaders is revolutionizing early childhood learning opportunities in our community.

Get Ready! has two essential parts: *Get Ready! Camp* and *Get Ready! Child care*. *Get Ready!* is

designed with three outcomes in mind: provide a unique learning opportunity for children from birth to age 5, help parents discover how they can easily begin learning with their children, and increase community awareness of the importance of early childhood learning.

The importance of the children's learning and developmental experiences cannot be overstated. Of even greater significance is the parental learning that will help parents continue these learning experiences for their children. Additionally, the fur-

ther development of childcare teachers' skills and resources will have significant impact on the many children they will have in their classrooms and centers for years.

Over 328 children and 220 adults participated in *Get Ready! Camp* in 2012, and many attended regularly. Collectively there were over 2,000 contacts made. The *Get Ready!* teachers worked with 28 different childcare teachers serving over 1,000 children in those centers.



Why *Get Ready!*?

We absolutely must invest in exceptional early learning opportunities for every child if we are going to improve our educational outcomes as a state and country. But this isn't just about measures and outcomes. Our parents deserve access to these opportunities to discover how to help their children learn; our children deserve this investment at the time it can most affect their future. The future of our communities depends upon this investment. Our communities are making a difference by coming together and addressing specific issues locally. And thus, *Get Ready!* offers all parents who have these desires for their children the opportunities to join their children in discovering the exciting world of learning and of believing in themselves.

What Does Philanthropy Look Like?



Charley Nell Llewellyn spent her lifetime working to make a difference for people

Now through her extraordinary gift to our community, her life will make a difference forever. Central Kentucky Community Foundation is honored to serve as Mrs. Llewellyn's ***forever partner*** to bring her gift to life for students and the future of our community.

Llewellyn Scholarship Fund \$2.42 Million

*A lifetime invested in education,
created a legacy for education*

***The Llewellyn Scholarship Fund will award scholarships to
Hardin County Schools graduates beginning in the spring of 2014.
These scholarships will be renewable for up to four years for students
maintaining academic eligibility.***

Our Funds and our Partners make our community a better place

Bob and Ella Mae Wade Fund
 Brown Pusey Fund
 Capogna Science Fund
 Carol Withrow Nursing Fund
 Col. Larry and Betty Sue French
 Col. Michael Baymor Scholarship Fund
 Conrad Hotopp Family Fund
 Dr. Chris and DaneNell Knight Fund
 ECTC Capital Projects Fund
 ECTC Campus Improvement Fund
 Elizabethtown Community/ Technical College Fund
 Elizabethtown Educational Foundation
 Endowment for ECTC Faculty/Staff Excellence
 Florence Y. Mason Fund
 Hardin County Cares Fund
 Hardin County Schools Partnership Grants
 Hardin County Public Library Mitchell Book Fund
 Hardin County Schools Support Fund
 Helen P. deGraffenried Fund
 Holbert Family Fund
 J.R. and Carrie Lee Edwards Scholarship Fund
 James and Betty Holeman Scholarship Fund
 John Dink Scholarship Fund
 Kennard and Melva Peden Fund
 Kentucky Nonprofit Network Fund
 Lanny Skees Memorial Scholarship Fund
 Llewellyn Scholarship Fund
 Mac Michaelis Scholarship Fund
 Martha Jane Hamilton Nursing Scholarship
 Marvin and Joyce Benjamin Fund
 Owen J. Estes Memorial Scholarship Fund
 Ray Family Fund for Endow Kentucky
 Ruby N. Deitchman Fund
 Sallie W. Pusey Fund
 Samuel G. Jenkins, Jr. Fund for KET
 Scholarship General Fund
 William A. and Sallie W. Pusey Fund
 The Wade Fund for Endow Kentucky
 Llewellyn Charitable Remainder Trust (CRT) Funds

Types of Funds

Donors can choose from a diverse menu of funds offered by CKCF that can be individualized to meet the donors' intent. Offering an assortment of funds ensures a wide range of community issues and causes are addressed.

The CKCF **Unrestricted Fund, Making a Difference Every Day (MADE Fund)** allows your gift to be used as needed to meet changing community needs. The endowed funds grow over time to give support where the greatest needs exist.

Field of Interest Funds offer permanent funding for areas of community life such as education or health.

Donor Advised Funds give donors the opportunity to recommend grants to eligible charitable recipients. Donor Advised Funds may be established as endowed or nonendowed funds.

Designated Funds provide ongoing funding for a specific nonprofit organization or purpose.

Agency Funds established by a nonprofit organization for their perpetual benefit.

Scholarship Funds provide support for individuals who are pursuing training or educational opportunity to fulfill their life dreams.

Geographic Funds are a collection of assets designated to benefit a specific community or geographic service area that operates under the guidance of, or in accordance with an agreement with CKCF.

The *Scholarship General Fund* was established by generous gifts over many years by:

Accumetric
 Chase
 Cecilian Bank
 Citizens Bank of Grayson County
 Quick and Coleman
 Allene Craddock
 Lawrence O. and Nannie "Lewis" Davis
 Eleanor Douglas Memorial
 Dow Corning
 Dr. and Mrs. E.H. Durnil
 E.M.B.
 E-town Laundry
 Dana Dibble Farra Memorial

First Citizens Bank
 First Federal Savings Bank
 JMF Hays
 Jesse and Gertrude "Woosley" French
 Larry Hall
 Lewis Hall Memorial
 Linda Lee Hays
 Hardin/LaRue Medical Society
 Hardin Memorial Hospital
 Joe and Lenelle Hays
 Keith Monument
 Lincoln National Bank
 W.A. and Connie Litzenberger

Larry W. Logsdon Memorial
 J.H. "Bok" Mitchell Memorial
 Mouser Custom Cabinets
 Montgomery Imports
 James S. Owen Memorial
 T.J. and Margaret Patterson
 PNC Bank
 Dr. and Mrs. O.M. Richardson
 Jennings and Arlene Smith
 T.K. Stone Memorial
 Surgical Specialists
 Portis and Patricia Wheeler
 Wilson and Muir Bank

2012 Financial Highlights

Current assets	\$13,483,000
Fixed assets	\$ 256,000
Total assets	\$13,739,000

Program Administrative Expenses: **\$231,200**

Number of new funds: **28**

Total value of new funds: **\$9,867,023**



All investments to Central Kentucky Community Foundation are professionally managed and all charitable investments receive the maximum tax deduction allowed by law. Investors enjoy the added reassurance of accountability offered by an annual independent audit.

The value of donors' gifts and the assets listed above, lies in the funding that returns to the community and the impact it makes on people. Based on 2012 end of year assets, CKCF expects to make available over \$500,000 to the community in 2013. This money will support initiatives as directed by each donor.

In 2012, funds were directed to 33 scholarship recipients, 10 ECTC faculty/staff development and 8 student projects, the Brown Pusey House, Hardin County Schools Classroom Grants, Churches, Boy Scouts and numerous other charitable organizations.

CKCF can bring together all of your charitable wishes through a unique means of managing endowments to achieve your goals.



The Endow Kentucky tax credit is available to any Kentucky taxpayer, business or individual, to receive a state tax credit up to 20% of their charitable gift to a permanent endowment at **Central Kentucky Community Foundation**. This credit is up to \$10,000 per taxpayer per year. (20% of a \$50,000 charitable gift.)

Gifts may be made to existing endowment funds or you may start a new fund to support an organization, cause, or community initiative you care about.

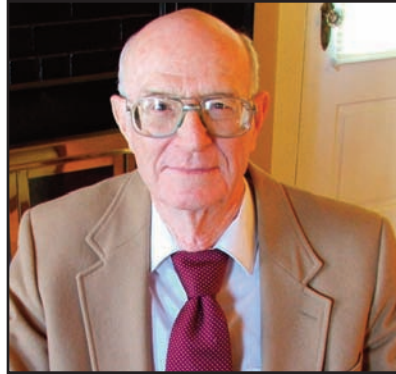
There are only \$500,000 in credits available statewide annually; contact us today, so we can help you take advantage of this tax savings.

8 www.ckcf4people.org



The Kennard and Melva Peden Fund awarded grants for three ECTC students and their professor to travel and study internationally in the summer of 2012. (l-r) Christian Peters, Andrea Ewen, Dr. Jim Murley, Laurie Jagers. The three students each spent about a month in their respective countries – Argentina, Costa Rica and Greece. Murley, ECTC art history professor, also travelled to Greece and taught art and archeology classes. “This experience is a wonderful opportunity for students to experience international travel and cultures before they get too far along in their college careers,” said Murley. “They must register for one 3-credit course, which is awarded by Western Kentucky University and automatically transferred to ECTC.

COLLIER LEAVES LEGACY IN EDUCATION



Jim Collier
1920-2012

This region is a much different and more thriving place because a young attorney named Jim Collier moved here in the 1950's.

In 1956, Mr. Collier championed the idea of a college for Elizabethtown. He saw a need for opportunities for people in the area to improve themselves, and in turn improve their community. He believed higher education was the key to make this happen.

To accomplish this, he founded North Central Education Foundation (predecessor of CKCF) to raise funds and to help establish Elizabethtown Community College which opened in 1964. His work also led to the legislation which established the community college system in Kentucky.

He made over 200 presentations to rally community support and resources for this college. Through his efforts, NCEF raised the money to purchase 227 acres, 55 of which were deeded to UK for the initial campus. Over time, land was also given for the Vocational-Technical School, Hardin County Public Library, and expansion of Elizabethtown Community and Technical College.

Mr. Collier passed away September 3, 2012, at 92. The legacy he leaves in education and its impact on community and economic development has literally shaped this community for the past 50 years and will continue to do so for many more to come.

CKCF Emeritus

John Behen
Bill Burks
Pat Durbin
Keith Emerine
Dr. William Godfrey

Lamonte Hornback
Walter "Dee" Huddleston
Susan Keith
Bill Swope
R.R. Thomas

The CKCF Board of Directors was saddened by the loss of Director Jackie Baier from Breckinridge County, who had served on the NCEF/CKCF Board since 1987.



Let's Do Some Good Today!



**Central Kentucky
Community Foundation**

306 W. Dixie Avenue
Elizabethtown, KY 42701
270-737-8393
www.ckcf4people.org