

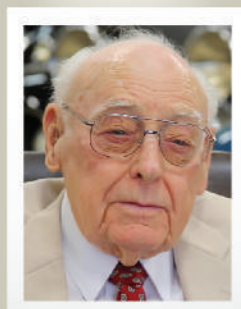
Helping People Help



Community Impact

2015

Spotlight *on Helping People Help*



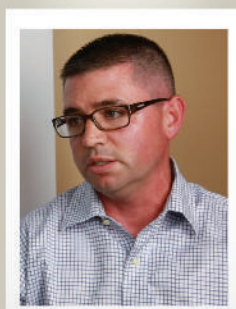
Bill Swope



April Jackson



Bob Wade Jr.

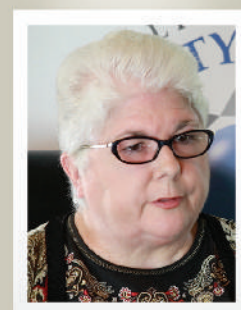


Chris Carter



Ella Mae Wade

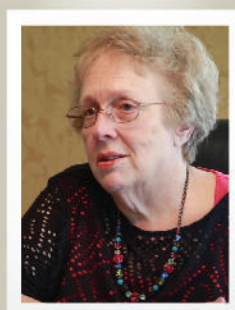
See fifteen community champions share their personal reflections on giving through a video at ckcf4people.org.



Ellen Mink



Janice Worden



Jimmie Dee Kelley



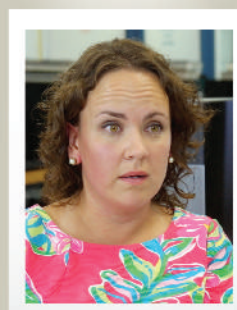
John Scott



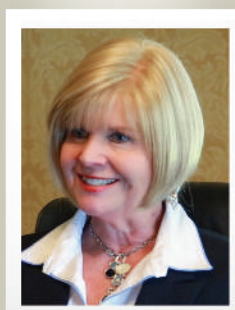
Keith Johnson



Kendra Stewart Scott



Lindsey Keith Alicna



Marilyn Ford



Matt Deneen



Rachel Ritchie

Helping People Help

Helping People Help is at the heart of the role Central Kentucky Community Foundation plays in our community. It may sound simple for someone who has a desire to help others to merely get involved, volunteer, extend a hand to another person. In reality, it is rarely that simple. Often the most meaningful efforts require collaboration, coordination and infrastructure for donor resources, be that time or money, to effectively help people.

How do people get connected to those they want to help? How do they discover the avenues of service available in our community? How do they connect with others who share their passion and desires? Where do people go with their ideas? How does our community foster and grow those ideas? CKCF serves as a catalyst for the great initiatives every community needs to continue to stay relevant.

Through these pages you will see examples of great ideas, passionate people and impact in our community. We are most honored and humbled to help people help. These stories are inspiring examples of what can happen when an idea, passion and well-developed resources come together in a community.

CKCF works with people to support our community's development, initiatives, organizations and causes through various types of funds – giving today to impact forever. Just as these stories demonstrate, each conversation about giving starts at a very personal level. What matters to you? Your community has a strong community foundation that welcomes your ideas and vision for our community. Let's explore how we can bring them to reality.



Davette B. Swiney
President/CEO

A Greater Way To Serve

Community service has always been an important part of my life. As a former elected official and a lifelong community volunteer, I know how important a culture of helping is for our community. Like most of you, I have certain community causes and organizations that are dear to my heart and I work directly with those efforts.

My service as CKCF Board Chair has a different focus. How do we best serve our donors and through them, our community? How do we foster growth in our community for philanthropic ideas? We do that by providing a platform and serving as a catalyst for people who want to help others. Helping People Help. A place for ideas and possibilities to come to life and bring new approaches, partnerships and opportunities to our community.

I look forward to continuing my community service through this role with CKCF. The impact shown throughout these pages has really touched me. I encourage you to not only read, but also to give some reflection to the ideas and purpose reflected in each person's story. Each idea started with a person. One person, who had an idea, and when connected to the right resources, created the way to help people.



Teri Bennett
CKCF Board Chairman



Paddlers with a Purpose Brings Recreation to All

When people come together, great things happen in our community. The Bob and Ella Mae Wade Canoe and Kayak Dock - the state's first handicapped-accessible canoe and kayak launching dock - is a perfect example.

A project of the Elizabethtown Paddlers Association, Paddlers with a Purpose set out to fund and build the dock. With an initial focus on disabled veterans, their passion for their pastime and for giving back drove the project. And with the partnership of more than 40 individuals, businesses, and organizations, disabled veterans and thousands of other disabled people have access to paddling.

Central Kentucky Community Foundation was proud to partner with the association and help make this important project a reality.

"We needed a partner to help us get this going, and Central Kentucky Community Foundation was that partner," said Matt Deneen, who led the project.

Like many organizations, the paddlers association does not have 501(c)3 nonprofit status, meaning donations to the organization are not tax deductible. Obtaining tax-exempt status can take more than a year and there are costs involved.

Paddlers with a Purpose had an opportunity to accept a significant gift, but the donation needed to

be tax deductible. That's where CKCF stepped in, acting as the fiscal sponsor and linking donors with this initiative.

"When presented with a great idea, our community is generous and will step up to make it happen," said CKCF President/CEO Davette B. Swiney. "Helping to make the fiscal connection between donors and initiatives is a need we can fill for start-up organizations or short-term projects, and we were very happy to provide that opportunity to Paddlers with a Purpose."



Pictured: Elizabethtown Mayor Edna Berger, Ella Mae Wade, Matt Deneen, Davette B. Swiney



*“We needed a partner to help get this going,
and CKCF was that partner.”*

Matt Deneen

With an original fundraising goal of \$30,000 to buy the dock, the project garnered enough support to raise \$55,000, which afforded an attractive kiosk at the dock’s edge.

The dock was dedicated in memory of Bob Wade Sr., who was a Korean War veteran, and his wife Ella Mae Wade, who, standing with Deneen, Swiney and Elizabethtown Mayor Edna Berger, cut the ceremonial ribbon.

As paddlers and supporters cheered for a demonstration, with some help, the idea had become reality.



The Bob and Ella Mae Wade Canoe and Kayak Dock was dedicated on Memorial Day.

Hart County Scholarship Alliance Making History in Education

A local champion for Hart County students to have opportunities for higher education - that is what we found when we first met with Steve Kistler, a retired Hart County High School teacher.

Steve believes in the importance of students having the chance to go to college and recognizes that opportunity does not exist for all students in his hometown. Instead of wondering who would do something to help, Steve gathered people who shared his passion and went to work to make it happen.

And the Hart County Scholarship Alliance was born.

"We all have a desire to help our local students obtain the education they need to be successful in life," said Kistler. "What we didn't have was the way individually to make that impact. Our dollars individually could not affect change and norms in our students."

Through an open discussion between local educators and the Alliance, a desire to grow the college bound culture among students evolved. With dual credit classes, students have an opportunity to take classes while still in high school that fulfill high school requirements and earn college credit at the same time. By taking these classes, students gain confidence in their ability to succeed in college and it allows them to do so at a reduced cost.

"A dual credit class typically runs \$250-\$300 including the required textbook," said Kistler. "This compares to over \$1,000 at a state university."

Although this significantly reduced price is attractive, there are few sources for assistance to pay for dual credit classes. Financial aid and KEES money do not become available until students have graduated from high school; therefore, some families are unable to cover the cost of several classes for their high school student. The Alliance is



2015-2016 HCSA Dual Credit Scholarships recipients

in a unique position to step into the changing configuration of higher education and meet student needs where they are today.

In their first year, the Alliance raised nearly \$13,000 and was able to pay for 64 college classes for 34 Hart County High School students.

"The guidance, expertise and management services provided by CKCF have really been essential for our work," said Ron Gonterman, Alliance member. "We are able to focus our work on educating our community about the value of this effort and raising money to help our students. CKCF handles the administrative functions to keep everything moving and handled properly. Without CKCF's services, our great desire to help, would still be just that ... a desire."

***"Without CKCF's services,
our great
desire to help,
would still be just that ...
a desire."***

Helping People Help...

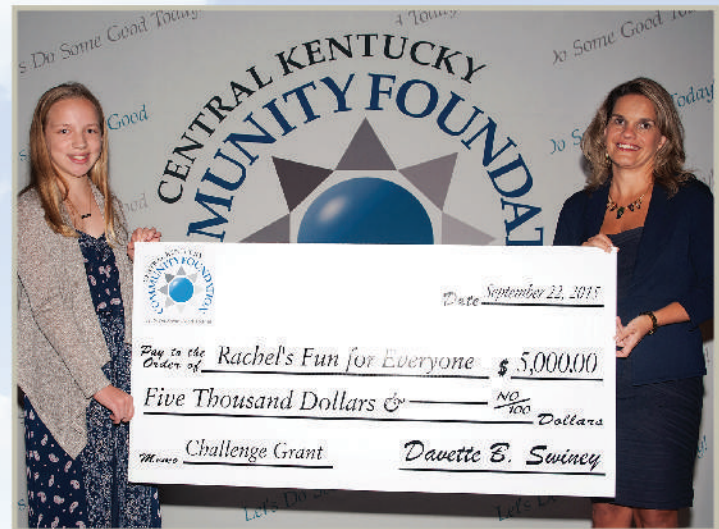
The dream of a 9-year-old girl

The ideas of children often get dismissed by well-meaning, busy adults. Fortunately for many children in our community, that didn't happen to Rachel Ritchie's idea. At the young age of nine, Rachel understood that all kids like to be outside and play on the playground, even those who may have physical limitations. Rachel recognized a community need for a playground that would allow children with physical challenges to play outdoors alongside their friends – fun for everyone. It was a big idea for a young person.

Rachel took the idea to her parents: the work and fun began. With the support of the City of Vine Grove and Vine Grove Fire Department, Rachel and her family began on a journey to raise \$100,000 to take her big idea to reality.

Since **Rachel's Fun For Everyone** idea was born, hundreds of people have come alongside of Rachel and connected resources to bring this inclusive playground closer to reality in our community. Central Kentucky Community Foundation awarded a \$5,000 matching grant to move the project closer to its \$100,000 goal.

Fundraising for Rachel's Fun For Everyone is 80% complete. As Rachel continues working to fully



fund the project, initial plans are to begin construction in 2017. Through Rachel's efforts, many people have the opportunity to help all children have access to outdoor recreation together. Rachel's vision and passion created an avenue for support that did not exist previously.

Her idea is about more than just a playground. For Rachel, it is representative of how she lives her life.

"You should always put others before yourself," she said. "It's the right thing to do. It's the right way to go. Always."



"You should always put others before yourself. It's the right thing to do. It's the right way to go. Always."

Rachel Ritchie

Helping Families

To Get Children Learning Early



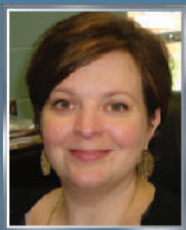
Kathy King

Kathy King wants people to understand why quality learning experiences for children birth – 5 should be important to everyone in our community.



Martha Page

Martha Page values quality experiences for students planning to work in early childhood education.



Beth Brandenburg

Beth Brandenburg wants to help every child learn.



Sandy Maldonado

Sandy Moldanado wants childcare providers to have access to the training and resources they need to help children learn while in their care.

Jennifer Arnold is passionate about fun learning experiences for our youngest children.

What brings these passionate people together and provides them an opportunity to make a lasting difference in our community?

Get Ready!



Get Ready! is a unique program for families with children birth – 5 that provides an opportunity for young children to learn through play, and for parents or other caregivers to be included in that experience.

Parents bring new babies home from the hospital and are busy with their physical care. The child's educational development and school often seems far away. However, we know those early years are the most formative for brain development that will affect learning throughout life. *Get Ready!* provides families with an opportunity to see how they can be involved in their child's learning right from the beginning. Certified early childhood teachers show parents how learning can be fun and part of everyday life.



“As a preschool teacher, I work with children everyday,” said Jennifer Arnold, who is also a *Get Ready!* teacher.

“*Get Ready!* gives me a chance to work more closely with families and show them fun, inexpensive ways they can expand their child's experiences. I also get to interact with them well before a child reaches preschool age.”

Through *Get Ready!* people like Jennifer and Beth get to help children learn and also help parents see the role they play from the very beginning with their child. Helping people help their children.

“I want to help my child grow, develop and learn,” said Tonya Brett, parent participating in *Get Ready!* “However, I don't always know what is appropriate for her age or how to best work on developing certain skills. The *Get Ready!* teachers show us what to do and how to keep looking for those learning opportunities. They make it fun for my child and me.”

Get Ready! provides the vehicle for many people in our community to carry out their passion for early childhood education. *Get Ready!* gives them a way to help other people.

Helping Faculty & Students

Peden Fund Enhances Education at ECTC

As a young man, Kennard Peden received a scholarship to attend Purdue University. However, he wasn't able to attend college due to family responsibilities and the Great Depression. Because of this, Kennard wanted to ensure others had the opportunity to attend college and pursue their educational and life goals.

A founding director of North Central Education Foundation, now CKCF, Kennard was instrumental in the work to bring higher education to the region. With his help, the foundation bought 227 acres and deeded 55 acres to the University of Kentucky for the creation of Elizabethtown Community College, now Elizabethtown Community and Technical College (ECTC). That commitment never ceased as the Pedens continued their support of higher education in the region throughout their lifetime

This long-standing commitment to providing educational opportunities culminated when the Pedens established an \$800,000 endowment with CKCF dedicated to encouraging faculty enrichment and student success at ECTC.

The Kennard & Melva Peden Fund provides funds annually to ECTC faculty so they are always equipped with the latest skills and resources to remain relevant in the classroom and to give students opportunities to enhance their educational goals.

"The Kennard and Melva Peden Fund presents the opportunity to teach my students in an international



At a reception recognizing the impact of projects funded by the Pedens, Sue Ballard spoke about the book she authored with funding from the Kennard and Melva Peden Fund .

setting. For many students traveling to another country is not only a first time event, it's also a pivotal experience that transforms their lives," says Jim Murley PhD, Art History Professor at ECTC and recipient of multiple grants from The Kennard and Melva Peden Fund.

"The Pedens provided funds for ECTC faculty so they are always equipped with the latest skills and resources to remain relevant in the classroom and to give students opportunities to enhance their educational goals," said Davette B. Swiney, CKCF President/CEO. "The Pedens had huge hearts and were very generous to this region."

With the help of CKCF, the Pedens desire to support faculty and students continues long after their lifetimes. Each year, CKCF works with a faculty review committee and ECTC to solicit and fund quality applications to foster faculty and student development. Carrying out the work for the Pedens to ensure their philanthropic goals are met is an honor. Their forever investment in our region is realized through CKCF's ability to help people help others.

ECTC professors and students attended the Phi Theta Kappa International Honor Society Convention in San Antonio, TX with funding through the Kennard and Melva Peden Fund.



Pictured left to right are: Navin Madras, Professor of Computer Information Technology; Tamara Kiper, Phi Theta Kappa student; Kevin Parrett, Chair of Global Studies & International Partnerships; Michelle Fisherman, Stephanie Johnson, and Jim Johnson, Phi Theta Kappa students

Celebrating **Community**

Each day the generosity and passion of our community touches the lives of many people through various programs and organizations. How do these really great initiatives come to fruition?

Central Kentucky Community Foundation recognized the significance of these efforts and the people who helped make them a reality at the annual Celebrating Community Philanthropy luncheon. Showcasing how an idea was generated and through collective resources, expertise, and passion, add to the essence of our community.



"The continued demonstration and reflection on giving by people who create ways for others to help is inspiring and a tribute to the passion and commitment in our community."

Davette B. Swiney, President / CEO Central Kentucky Community Foundation



Philanthropy
**"Is a lot more about the
IDEAS
than it is about the money."**

Bob Wade, Jr.



Helping People Help

*“That’s
what we are
here for.”*

- Bill Swope



The North Hardin High School Marching Band, selected to participate in the Macy's Thanksgiving Day Parade, honored the crowd with its music.



Terry Patterson, 2014-2015 CKCF Board chair, welcomes guests to Celebrating Community Philanthropy



Rachel Ritchie visits with Mike Bowers about "Rachel's Fun for Everyone"

Helping People Help...

Women Empowering Women and Girls

When the founding women of Heels Together met for the first time in 2014, there were persistent questions they wanted answers to: “What are the unique problems confronting women and girls in our community that hold them back? What is standing in their way? How is the community currently responding to these challenges?”

At the heart of Heels Together is a desire to listen and learn from women’s life stories, to provide encouragement and deliver tools to build self-confidence; to empower the change necessary for economic advancement and achievement of life enrichment skills.



Community enhancement begins with the availability for advancement by each individual. Unfortunately, a disproportionate number of those not realizing their full potential are women and girls.

When mapping community assets that hold the most promise and potential to contribute to a vibrant community, the progress of women and girls offers a key advantage. When they achieve their goals and aspirations, and take their rightful place in the community, it advances everyone.

The core work of Central Kentucky Community Foundation is Helping People Help others.

Heels Together emerged from this centering theme and fits nicely into CKCF’s circle of competency.

Heels Together is more than a name of a women’s initiative; it’s a belief system about the future of our community, a catalyst to build strong families, careers, businesses and industries.

Heels Together aspires to create a more open community. Open, as in opportunities for: upward economic mobility, leadership, lifelong learning, developing a set of skills that are portable.

When you think about what good one woman and a thousand dollars could do for someone else you immediately see its limits. When dozens of women come together and pool their financial resources, helping other women and girls for both the short-term and long-term, seems very doable. Heels Together provides the platform and the required services.





In 2015, 44 women did just that – they made a \$1,000 investment through the platform of Heels Together to collectively advance women and girls in our community.

The time, knowledge, and ideas of this group created synergy and working through Central Kentucky Community Foundation their shared idea took shape and grew into something more -- \$20,000 to be paid out in grants in 2015. Central Kentucky Community Foundation became the connector and administrator linking community resources, caring hearts and agency initiatives to help women and girls.

“ It is our duty to be a leading force for equity by creating opportunities and support for other women. ”



- Christy Pritchard



“ Our community needs more female leadership and this is a good way to grow leaders from within. ”



-Lindsey Alicna



Heels Together awarded two grants in 2015

\$12,000 to Heels Academy (below left)

A collaborative effort between Helping Hand of Hope and other organizations to help move women toward economic self-sufficiency.

\$12,000 to Court Appointed Special Advocates (CASA) of the Heartland

A project to help prepare female juvenile victims of abuse and neglect for transition to adulthood with life skills and resources for success.



Helping People Honor Loved Ones

Normaline Skees knew she wanted to help students in our community and create a legacy for her late husband, Lanny. The decision to establish a scholarship fund was easy. She soon found out it wasn't nearly so easy to actually make that happen. A lot of time, work, and expertise is required to administer a scholarship fund properly. Her desire to help others could have easily been dampened had she not persevered and found a trusted partner to help her create educational opportunities for others.

"I was misdirected to several places that were not able to help me with my scholarship fund," said Mrs. Skees. "It was frustrating. I wanted to do this for our students, and for my husband, but there had to be someone who could help me."

Mrs. Skees established the **Lanny Skees Memorial Scholarship** in 2013 in memory of her husband Lanny. Lanny was very active in agriculture, having served as a milk inspector, farmer, and businessman. He valued his education from Western Kentucky University and the positive influence of FFA in youth. Mrs. Skees fashioned a scholarship to honor those things that were important to Lanny.

Through her establishment of an endowed scholarship, one Central Hardin FFA graduating senior will be awarded the Lanny Skees Memorial Scholarship each year. This scholarship is for a student to study agriculture at Western Kentucky University.



Normaline
Skees

Brittany
Brangers

2015
Lanny Skees
Memorial
Scholarship
Recipient



"I met Mrs. Skees not long after her husband passed away," said Davette B. Swiney, President/CEO of CKCF. "She had many business and estate matters to take care of, but she was most passionate about establishing the Lanny Skees Memorial Scholarship Fund."

"Through our partnership with Mrs. Skees, we facilitate the scholarship application and awards process so she can best help local students. From beginning to end, we handle the administration for donors."

CKCF publicizes the scholarship opportunities and works with students and schools to have quality applications for scholarships. Community volunteers review and make scholarship determinations and ultimately, CKCF works with the student recipients and the colleges they plan to attend.

Personalized scholarships are a great way to honor the legacy of a loved one.



**In 2015,
357 students
registered with
Scholarship
Central.
\$95,750
were awarded
through
79 scholarships
to 63 students.**

Scholarship Central:

Helping students further their educational goals



*Removing barriers
makes reaching
educational goals
easier for students.*

Connecting students and scholarships is not always an easy task. As navigating higher education, financial aid, and scholarships get more complex, how do we as a community stay current on regulations and processes and make it simpler for our families?

THROUGH SCHOLARSHIP CENTRAL.

Scholarship Central provides an online portal for students to apply for multiple scholarships with one application, making the process simpler and more accessible for students. From starting the application, through the review process, to final awards, the electronic format makes the process easier for our students, guidance counselors, reviewers and donors.

2015 Financial Position

ASSETS

Current Assets	
Investment Funds	\$16,574,285
Cash Accounts	\$244,048
Total Current Assets	<u>\$16,818,333</u>
Total Fixed Assets	\$238,298
TOTAL ASSETS	<u>\$17,056,631</u>

LIABILITIES AND EQUITIES

Total Liabilities	\$900,522
Total Equity	<u>\$16,156,109</u>
TOTAL LIABILITIES AND EQUITIES	<u>\$17,056,631</u>

GIVING

Total donor gifts to CKCF: \$1,570,618

Number of New Funds: 21

Total Number of Funds: 86



What is Endow Kentucky?



The Endow Kentucky program was authorized by the 2010 General Assembly to spur the development and growth of philanthropy, particularly in rural areas of the Commonwealth.

The Endow Kentucky Tax Credit is available to any Kentucky taxpayer, business or individual, to receive a tax credit of 20% of their charitable gift to an endowment fund at Central Kentucky Community Foundation. The credit is up to \$10,000 per taxpayer per year. (20% of a \$50,000 charitable gift.)

The credit is in addition to the normal federal deduction for a charitable gift.

What gifts qualify?

Gifts can be cash, appreciated stock, mutual funds or similar assets and must be made to a certified community foundation, such as Central Kentucky Community Foundation. Donors may make a gift in any amount to an existing endowment or start a new fund to support an organization or community cause. Endow Kentucky Funds must support Kentucky nonprofit organizations and community initiatives. To determine the exact impact of a tax credit, donors should consult their tax professional.

How is CKCF involved with Endow Kentucky?

Only certified community foundations are eligible to offer the Endow Kentucky Tax Credit. Central Kentucky Community Foundation has been approved as a qualified community foundation to offer the Endow Kentucky Tax Credit.

CKCF works with donors in this region to take full advantage of the tax opportunities available to them and assists donors every step of the way to secure Endow Kentucky Tax Credits. Ultimately, the endowment gift is invested and the earnings from the fund will benefit our community forever. CKCF helps people identify and connect with the community initiatives and organizations they are passionate about helping through their Endow Kentucky Fund.



“Endow Kentucky gives people in our community a way to achieve their charitable goals and fund their favorite charities **forever**. With the help and expertise of CKCF, donors can receive additional tax benefits and depend on CKCF for administration services.

I learned about Endow Kentucky when my tax advisor told me about it. It seemed to be the perfect fit for what I want to do. And CKCF is a perfect fit to carry out the purpose of Endow Kentucky. I have a number of charities that I like to support financially. I can do that so easily and efficiently through Endow Kentucky and CKCF.”

- Bill Swope

Why Endow Kentucky?

Endow Kentucky can facilitate public initiatives, inspire wealth-building, empower communities and transform Kentucky.

Our Funds & Our Forever Partners

Anne and Carl Swope Fund
Anne and Carl Swope Fund for Endow Kentucky
Bob and Ella Mae Wade Fund
Brent Wagoner Excellence in Education Scholarship Fund
Brice Taylor Memorial Scholarship Fund
Brianna Taylor Memorial Scholarship Fund
Brown Pusey Fund
Bowers Family Endowment Fund
Capogna Science Fund
Carol Withrow Nursing Fund
CASA Fund
Central Kentucky Community Foundation Endowment Fund
Clarity Solutions for Women Fund
Col. Larry and Betty Sue French Fund
Col. Michael Baymor Scholarship Fund
Conrad Hotopp Family Fund
Doug and Lisa Cantrell ECTC Faculty Scholarship Fund
Dow Corning Foundation Donor Advised Fund
Dr. Chris and DaneNell Knight Fund
Dr. Jim Owen Scholarship Fund
Dr. Linda Mayhew STEM Scholarship Fund
ECTC Capital Projects Fund
ECTC Campus Improvement Fund
ECTC Faculty/Staff Development Fund
Elizabethtown Community/Technical College Fund
Elizabethtown Educational Foundation
Elizabethtown High School Class of 1966 Scholarship Fund
Elizabethtown Police Foundation Fund
Endowment for ECTC Faculty/Staff Excellence
Ernest and Wilma Rider Fund for Lucas Grove Baptist Church
First Christian Church Endowment Fund
First Presbyterian Legacy of Faith Fund
First Presbyterian Legacy of Faith Fund for Endow Kentucky
First Presbyterian Legacy of Hope Fund
Florence Y. Mason Fund
Hardin County Cares Fund
Hardin County Habitat for Humanity Fund
Hardin County Public Library Duff Book Fund
Hardin County Public Library Mitchell Book Fund
Hardin County Schools Early College/Career Center Fund
Hardin County Schools Partnership Grants
Hardin County Schools Support Fund
Hart County Scholarship Alliance Fund
Heels Together Endowment Fund
Heels Together Grant Fund
Helen P. deGraffenried Fund
Helping Hand of Hope Fund
Holbert Family Fund
J.R. and Carrie Lee Edwards Scholarship Fund
James and Betty Holeman Scholarship Fund
James and Patricia Schory Fund
Joe and Lenelle Hays Community Spirit Fund
John Dink Scholarship Fund
Kennard and Melva Peden Fund
KySTE Endowment Fund
Lahoma Routt Fund
Lanny Skees Memorial Scholarship Fund
Lisa Hays Charness Memorial Scholarship Fund
Llewellyn Scholarship Fund
Mac Michaelis Scholarship Fund
M.A.D.E. Fund
Martha Jane Hamilton Nursing Scholarship Fund

Marvin and Joyce Benjamin Fund
Mike Ovesen Memorial Scholarship Fund
Owen J. Estes Memorial Scholarship Fund
Ray Family Fund for Endow Kentucky
Ruby N. Deitchman Fund
Sallie W. Pusey Fund
Samuel G. Jenkins, Jr. Fund for KET
Scholarship General Fund
Swope Family Fund for Endow Kentucky
Swope Family of Dealerships Fund
United Way of Central Kentucky Fund
William A. and Sallie W. Pusey Fund
The Wade Fund for Endow Kentucky
Llewellyn Charitable Remainder Trust (CRT) Funds

The Scholarship General Fund was established by generous gifts since 1960 by:

Accumetric
Chase
Cecilian Bank
Citizens Bank of Grayson County
Allene Craddock
Lawrence O. and Nannie "Lewis" Davis
Eleanor Douglas Memorial
Dow Corning
Dr. and Mrs. E.H. Durnil
E.M.B.
E-town Laundry
Dana Dibble Farra Memorial
First Citizens Bank
First Federal Savings Bank
Jesse and Gertrude "Woosley" French
Larry and Betty Sue French
Dr. Larry Hall
Lewis Hall Memorial
Hardin/LaRue Medical Society
Hardin Memorial Hospital
J.M.F. Hays
Joe and Lenelle Hays
Linda Lee Hays
Keith Monument
Lincoln National Bank
W.A. and Connie Litzenberger
Larry W. Logsdon Memorial
J.H. "Bok" Mitchell Memorial
Montgomery Imports
Mouser Custom Cabinets
James S. Owen Memorial
T.J. and Margaret Patterson
PNC Bank
Quick and Coleman
Dr. and Mrs. O.M. Richardson
Jennings and Arlene Smith
Surgical Specialists
T.K. Stone Memorial
Portis and Patricia Wheeler
Wilson and Muir Bank

Funds opened in 2015 are in bold.



Board of Directors



Seated left to right: Brian Kerr, Anne Swope, Teri Bennett, Davette B. Swiney, Barbara Proffitt, R. Terry Bennett

Standing left to right: Jim Schory, Kevin Addington, Ronnie Pence, Ben LaRue, Dr. Jeff Richardson, Michael Coyle, Terry Patterson

Not pictured: D. Dee Shaw, Rick Baumgardner, Tommy Turner, Senator Dennis Parrett



Officers

Teri Bennett – *Chairman*
 Dr. Jeff Richardson – *Vice-Chairman*
 Ronnie Pence – *Secretary / Treasurer*
 Davette B. Swiney – *President / CEO*

270-737-8393 www.ckcf4people.org